

PCB Connectors



2021



About Qualwave Inc.

Qualwave Inc. is the top designer and manufacturer of microwave and millimeter wave products. We supply both active and passive components in a wide frequency range from DC to 110GHz all over the world. We provide a series of standard products to meet the needs of most customers. Meanwhile we customize products according to special requirements.

Our company is equipped with 67GHz vector network analyzers, signal sources, spectrum analyzers, power meters, oscilloscopes, welding platforms, resistance and voltage withstand test instruments, high and low temperature test systems and other research and development, production and testing equipments. Our quality management system has been successfully registered for GB/T19001-2016/ISO9001:2015. Like the name, quality is one of the key success factors. Our products are designed and manufactured with the latest tools and the best quality materials. Our engineers are keeping quality in mind through designing, manufacturing and testing. We are proud that many clients rated five stars in their feedback for product quality.

Our team is comprised of professional microwave and millimeter wave engineers and specialized support staff. We take customer's needs as the first priority, as the success of our customers is also our success. We optimized design and manufacture processes by adding more flexibility, which helps to shorten the lead time. Our management and service are customer oriented, ensuring to response to customer as soon as possible.

Products

Cable Assemblies	Coaxial Adapters	Connectors	DC Blocks
Detectors	Attenuators	Terminations	Switches
Power Dividers	Couplers	Circulators	Isolators
Phase Shifters	Amplifiers	Frequency Sources	



Address: 5F, Bldg.1, Tianke Plaza, No.999 Tiangong Ave., Tianfu New Area, Chengdu, 610213, China

Tel: +86-28-6115-4929

Email: sales@qualwave.com

Table of Contents

1.85mm

1.85mm Field Replaceable Connectors.....	1
1.85mm Straight Terminal With Metal Connectors.....	4

2.4mm

2.4mm Field Replaceable Connectors.....	5
2.4mm Straight Terminal With Metal Connectors.....	8
2.4mm Straight Terminal With Dielectric Connectors.....	9
2.4mm Straight Terminal Without Dielectric Connectors.....	10

2.92mm

2.92mm Field Replaceable Connectors.....	13
2.92mm Straight Terminal With Metal Connectors.....	17
2.92mm Straight Terminal With Dielectric Connectors.....	19
2.92mm Straight Terminal Without Dielectric Connectors.....	21
2.92mm Printed Circuit Board Mount Connectors.....	24

SSMA

SSMA Field Replaceable Connectors.....	25
SSMA Straight Terminal With Metal Connectors.....	28

SMP

SMP Straight Terminal With Metal Connectors.....	29
--	----

SMA

SMA Field Replaceable Connectors.....	31
SMA Straight Terminal With Metal Connectors.....	35
SMA Straight Terminal With Dielectric Connectors.....	39
SMA Straight Terminal Without Dielectric Connectors.....	43
SMA Tab Terminal Connectors.....	46
SMA Printed Circuit Board Mount Connectors.....	49

N

N Field Replaceable Connectors.....	51
N Straight Terminal With Metal Connectors.....	53
N Tab Terminal Connectors.....	54

TNC

TNC Field Replaceable Connectors.....	55
TNC Straight Terminal With Metal Connectors.....	56
TNC Tab Terminal Connectors.....	57

Feedthroughs

Feedthroughs.....	58
-------------------	----

Electrical

Frequency:	DC~67GHz
VSWR:	1.25 max.
Impedance of Dielectric:	3000MΩ min.
Impedance of Inner Conductor:	3mΩ max.
Impedance of Outer Conductor:	2.5mΩ max.
Voltage Withstand:	500V DC
Impedance:	50Ω

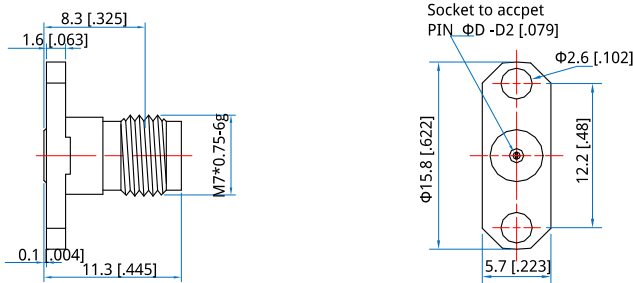
Mechanical

RF Connector:	1.85mm
Mating Life Cycle:	500 cycles
Outer Conductor:	Passivated SUS303 stainless steel
Dielectric:	PEI
Inner Conductor:	Gold plated beryllium copper

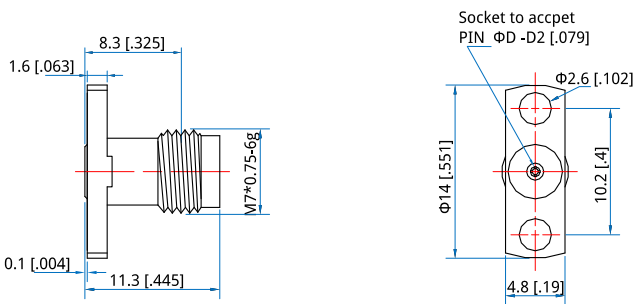
Environmental

Temperature: -55~+165°C

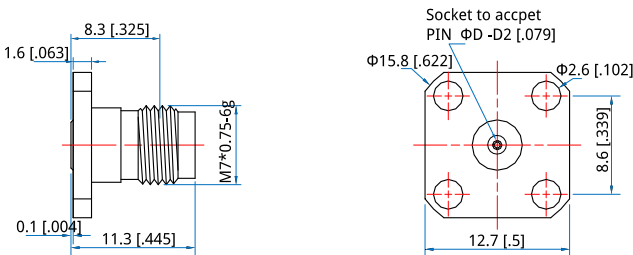
Outline Drawings - 1.85mm Field Replaceable Connectors



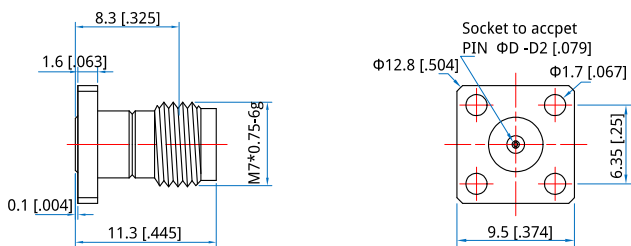
Part Number	ΦD
QCV-FL2G-S23-01	Φ0.23 [0.009]
QCV-FL2G-S30-01	Φ0.3 [0.012]



Part Number	ΦD
QCV-FL2G-S23-02	Φ0.23 [0.009]
QCV-FL2G-S30-02	Φ0.3 [0.012]

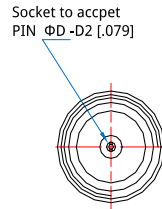
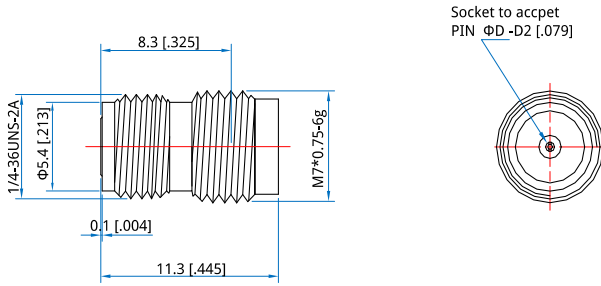


Part Number	ΦD
QCV-FL4G-S23-01	Φ0.23 [0.009]
QCV-FL4G-S30-01	Φ0.3 [0.012]

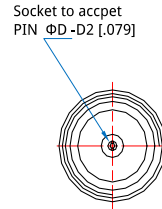
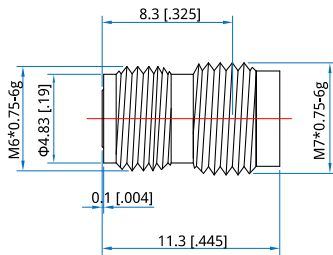


Part Number	ΦD
QCV-FL4G-S23-02	Φ0.23 [0.009]
QCV-FL4G-S30-02	Φ0.3 [0.012]

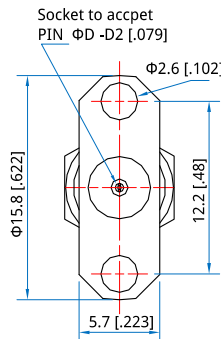
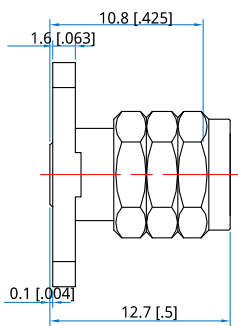
Outline Drawings - 1.85mm Field Replaceable Connectors



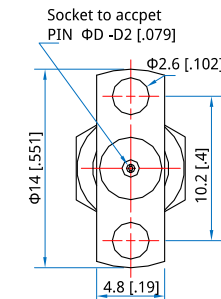
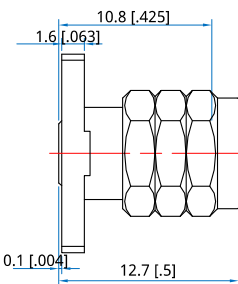
Part Number	ΦD
QCV-FYG-S23-01	Φ0.23 [.009]
QCV-FYG-S30-01	Φ0.3 [.012]



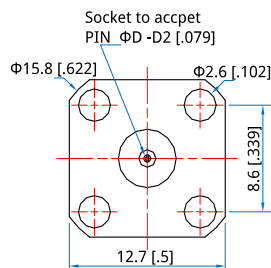
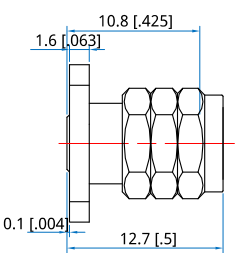
Part Number	ΦD
QCV-FYG-S23-02	Φ0.23 [.009]
QCV-FYG-S30-02	Φ0.3 [.012]



Part Number	ΦD
QCV-ML2G-S23-01	Φ0.23 [.009]
QCV-ML2G-S30-01	Φ0.3 [.012]

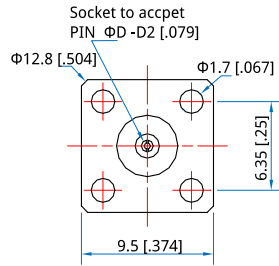
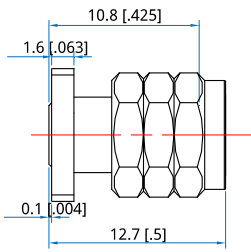


Part Number	ΦD
QCV-ML2G-S23-02	Φ0.23 [.009]
QCV-ML2G-S30-02	Φ0.3 [.012]



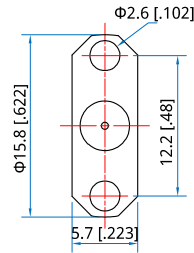
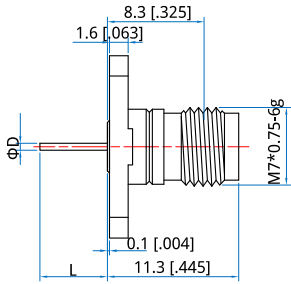
Part Number	ΦD
QCV-ML4G-S23-01	Φ0.23 [.009]
QCV-ML4G-S30-01	Φ0.3 [.012]

Outline Drawings - 1.85mm Field Replaceable Connectors

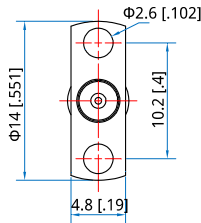
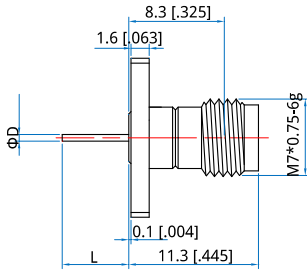


Part Number	ΦD
QCV-ML4G-S23-02	Φ0.23 [0.009]
QCV-ML4G-S30-02	Φ0.3 [0.012]

Outline Drawings - 1.85mm Straight Terminal Without Dielectric Connectors



Part Number	ΦD	L
QCV-FL2G-D30-01	0.3 [.012]	1.2 [.047]
QCV-FL2G-D30-02	0.3 [.012]	2 [.079]
QCV-FL2G-D58-03	0.58 [.023]	5.85 [.23]



Part Number	ΦD	L
QCV-FL2G-D30-04	0.3 [.012]	1.2 [.047]
QCV-FL2G-D30-05	0.3 [.012]	2 [.079]
QCV-FL2G-D58-06	0.58 [.023]	5.85 [.23]

Electrical

Frequency: DC~50GHz
 VSWR: 1.15 max.
 Impedance of Dielectric: 3000MΩ min.
 Impedance of Inner Conduct: 3mΩ max.
 or:
 Impedance of Outer Conduct: 2mΩ max.
 or:
 Voltage Withstand: 750V DC
 Impedance: 50Ω

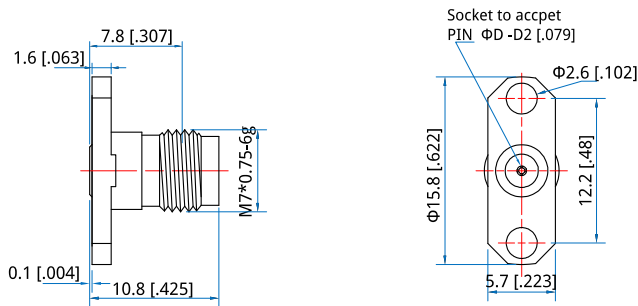
Mechanical

RF Connector: 2.4mm
 Mating Life Cycle: 500 cycles
 Outer Conductor: Passivated SUS303 stainless steel
 Dielectric: PEI or PEI & PTFE
 Inner Conductor: Gold plated beryllium copper

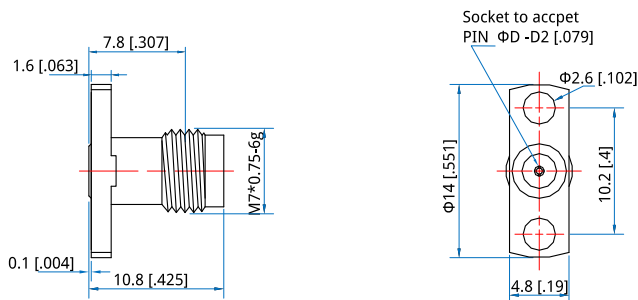
Environmental

Temperature: -55~+165°C

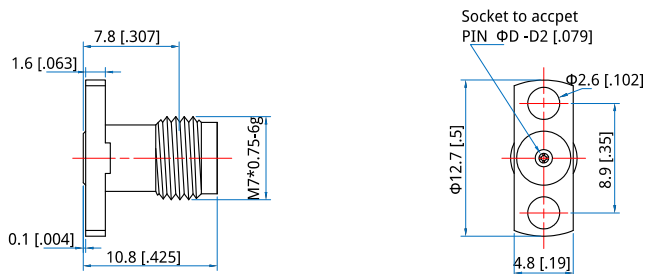
Outline Drawings - 2.4mm Field Replaceable Connectors



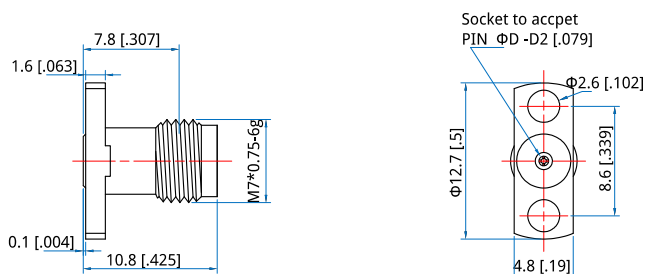
Part Number	ΦD
QC2-FL2G-S23-01	Φ0.23 [.009]
QC2-FL2G-S30-01	Φ0.3 [.012]
QC2-FL2G-S38-01	Φ0.38 [.015]
QC2-FL2G-S51-01	Φ0.51 [.02]



Part Number	ΦD
QC2-FL2G-S23-02	Φ0.23 [.009]
QC2-FL2G-S30-02	Φ0.3 [.012]
QC2-FL2G-S38-02	Φ0.38 [.015]
QC2-FL2G-S51-02	Φ0.51 [.02]

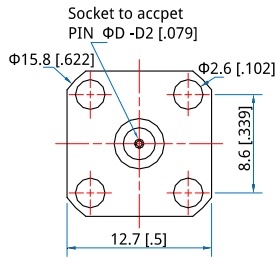
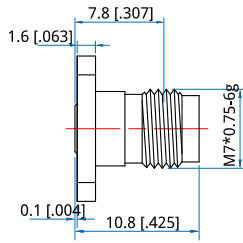


Part Number	ΦD
QC2-FL2G-S23-03	Φ0.23 [.009]
QC2-FL2G-S30-03	Φ0.3 [.012]
QC2-FL2G-S38-03	Φ0.38 [.015]
QC2-FL2G-S51-03	Φ0.51 [.02]

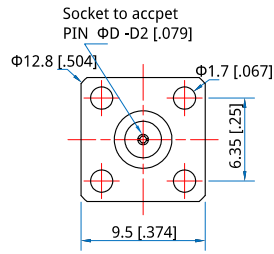
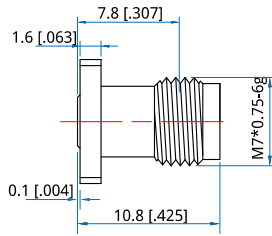


Part Number	ΦD
QC2-FL2G-S23-04	Φ0.23 [.009]
QC2-FL2G-S30-04	Φ0.3 [.012]
QC2-FL2G-S38-04	Φ0.38 [.015]
QC2-FL2G-S51-04	Φ0.51 [.02]

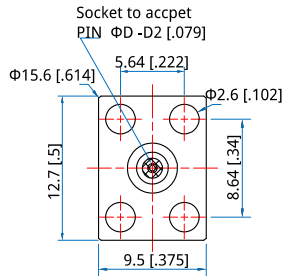
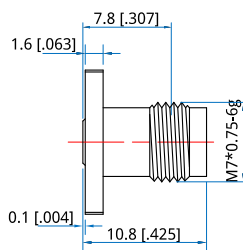
Outline Drawings - 2.4mm Field Replaceable Connectors



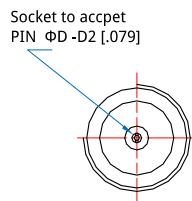
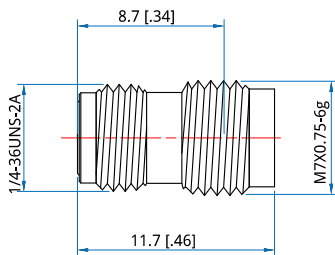
Part Number	ΦD
QC2-FL4G-S23-01	Φ0.23 [.009]
QC2-FL4G-S30-01	Φ0.3 [.012]
QC2-FL4G-S38-01	Φ0.38 [.015]
QC2-FL4G-S51-01	Φ0.51 [.02]



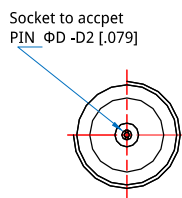
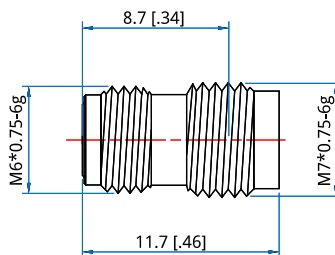
Part Number	ΦD
QC2-FL4G-S23-02	Φ0.23 [.009]
QC2-FL4G-S30-02	Φ0.3 [.012]
QC2-FL4G-S38-02	Φ0.38 [.015]
QC2-FL4G-S51-02	Φ0.51 [.02]



Part Number	ΦD
QC2-FL4G-S23-03	Φ0.23 [.009]
QC2-FL4G-S30-03	Φ0.3 [.012]
QC2-FL4G-S38-03	Φ0.38 [.015]
QC2-FL4G-S51-03	Φ0.51 [.02]

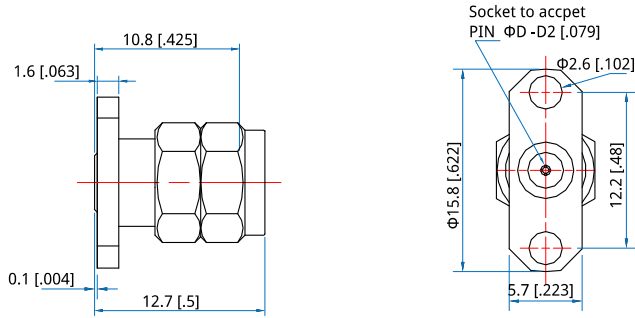


Part Number	ΦD
QC2-FYG-S23-01	Φ0.23 [.009]
QC2-FYG-S30-01	Φ0.3 [.012]
QC2-FYG-S51-01	Φ0.51 [.02]

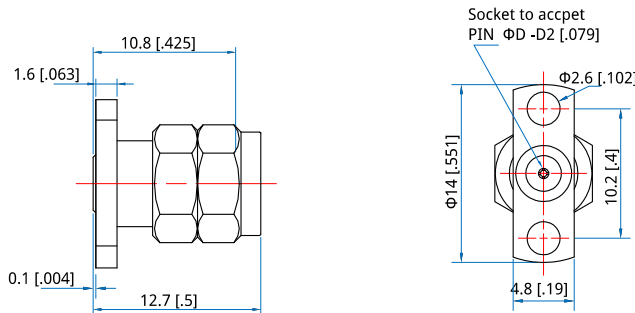


Part Number	ΦD
QC2-FYG-S23-02	Φ0.23 [.009]
QC2-FYG-S30-02	Φ0.3 [.012]
QC2-FYG-S51-02	Φ0.51 [.02]

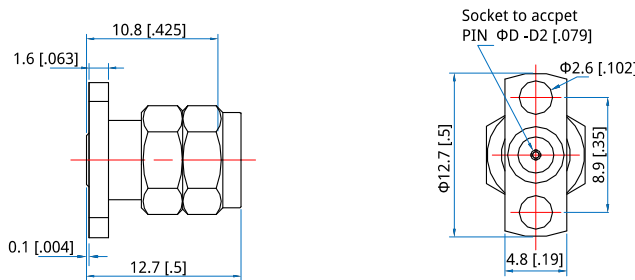
Outline Drawings - 2.4mm Field Replaceable Connectors



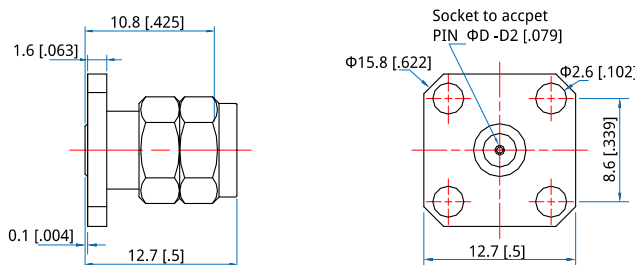
Part Number	ΦD
QC2-ML2G-S23-01	$\Phi 0.23 [0.009]$
QC2-ML2G-S30-01	$\Phi 0.3 [0.12]$
QC2-ML2G-S51-01	$\Phi 0.51 [0.2]$



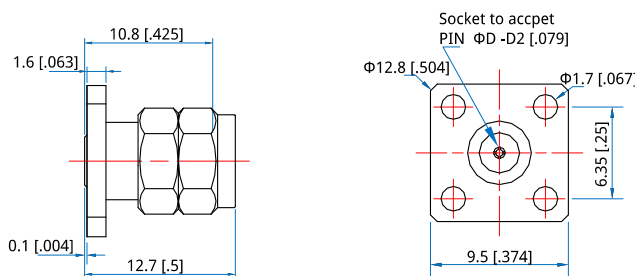
Part Number	ΦD
QC2-ML2G-S23-02	$\Phi 0.23 [0.009]$
QC2-ML2G-S30-02	$\Phi 0.3 [0.12]$
QC2-ML2G-S51-02	$\Phi 0.51 [0.2]$



Part Number	ΦD
QC2-ML2G-S23-03	$\Phi 0.23 [0.009]$
QC2-ML2G-S30-03	$\Phi 0.3 [0.12]$
QC2-ML2G-S51-03	$\Phi 0.51 [0.2]$

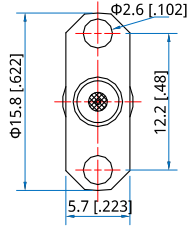
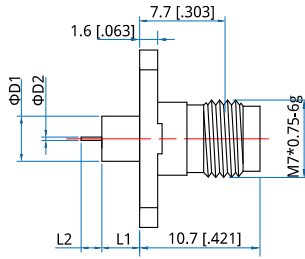


Part Number	ΦD
QC2-ML4G-S23-01	$\Phi 0.23 [0.009]$
QC2-ML4G-S30-01	$\Phi 0.3 [0.12]$
QC2-ML4G-S51-01	$\Phi 0.51 [0.2]$

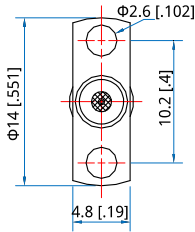
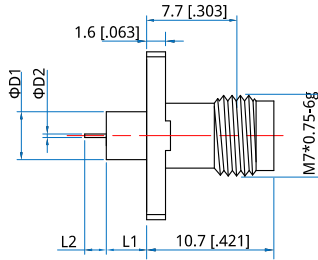


Part Number	ΦD
QC2-ML4G-S23-02	$\Phi 0.23 [0.009]$
QC2-ML4G-S30-02	$\Phi 0.3 [0.12]$
QC2-ML4G-S51-02	$\Phi 0.51 [0.2]$

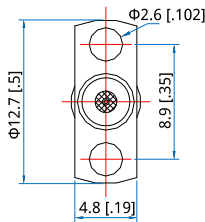
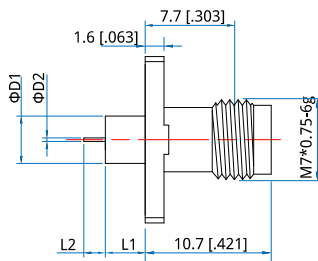
Outline Drawings - 2.4mm Straight Terminal With Metal Connectors



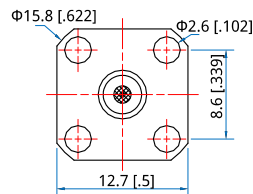
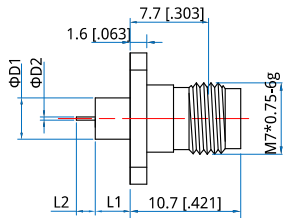
Part Number	ΦD1	ΦD2	L1	L2
QC2-FL2G-M30-01	4 [158]	0.3 [012]	1.4 [055]	1.5 [059]
QC2-FL2G-M30-02	4 [158]	0.3 [012]	3 [118]	1.5 [059]



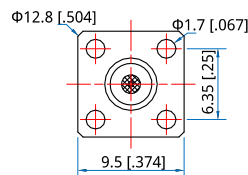
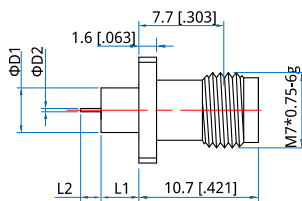
Part Number	ΦD1	ΦD2	L1	L2
QC2-FL2G-M30-03	4 [158]	0.3 [012]	1.4 [055]	1.5 [059]
QC2-FL2G-M30-04	4 [158]	0.3 [012]	3 [118]	1.5 [059]



Part Number	ΦD1	ΦD2	L1	L2
QC2-FL2G-M30-05	4 [158]	0.3 [012]	1.4 [055]	1.5 [059]
QC2-FL2G-M30-06	4 [158]	0.3 [012]	3 [118]	1.5 [059]

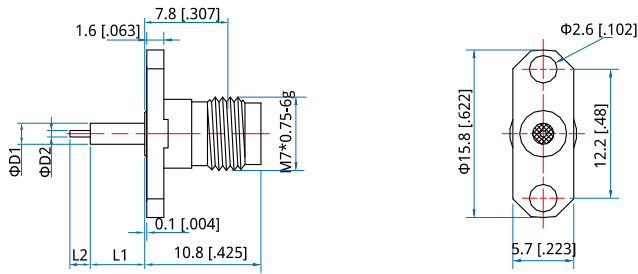


Part Number	ΦD1	ΦD2	L1	L2
QC2-FL4G-M30-01	4 [158]	0.3 [012]	1.4 [055]	1.5 [059]
QC2-FL4G-M30-02	4 [158]	0.3 [012]	3 [118]	1.5 [059]

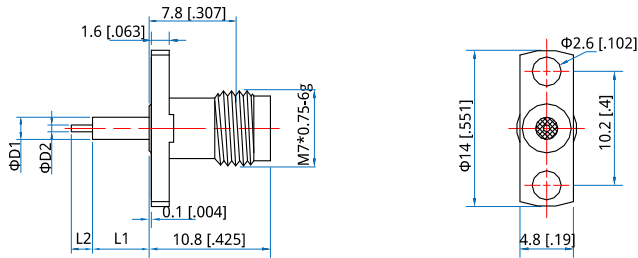


Part Number	ΦD1	ΦD2	L1	L2
QC2-FL4G-M30-03	4 [158]	0.3 [012]	1.4 [055]	1.5 [059]
QC2-FL4G-M30-04	4 [158]	0.3 [012]	3 [118]	1.5 [059]

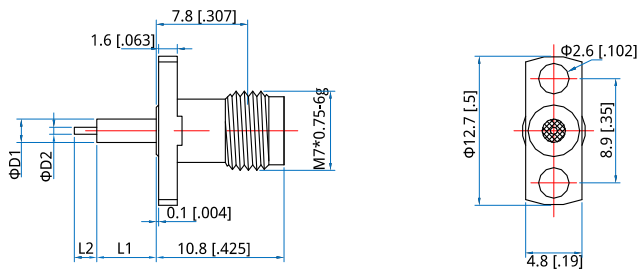
Outline Drawings - 2.4mm Straight Terminal With Dielectric Connectors



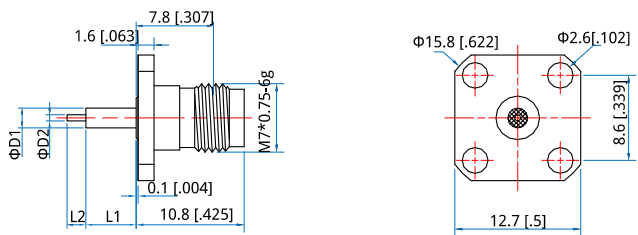
Part Number	ΦD1	ΦD2	L1	L2
QC2-FL2G-P30-01	1.67 [0.066]	0.3 [0.012]	1.4 [0.055]	1.5 [0.059]
QC2-FL2G-P30-02	1.67 [0.066]	0.3 [0.012]	3 [1.18]	1.5 [0.059]
QC2-FL2G-P60-03	2 [0.079]	0.6 [0.024]	6.35 [0.25]	1.27 [0.05]
QC2-FL2G-P60-04	2 [0.079]	0.6 [0.024]	5.1 [0.201]	1.9 [0.075]



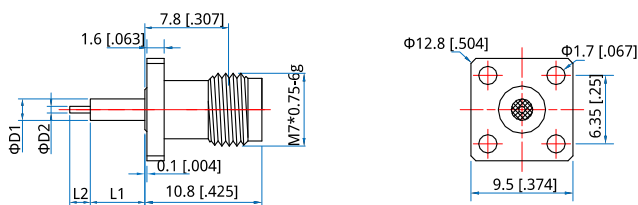
Part Number	ΦD1	ΦD2	L1	L2
QC2-FL2G-P30-05	1.67 [0.066]	0.3 [0.012]	1.4 [0.055]	1.5 [0.059]
QC2-FL2G-P30-06	1.67 [0.066]	0.3 [0.012]	3 [1.18]	1.5 [0.059]
QC2-FL2G-P60-07	2 [0.079]	0.6 [0.024]	6.35 [0.25]	1.27 [0.05]
QC2-FL2G-P60-08	2 [0.079]	0.6 [0.024]	5.1 [0.201]	1.9 [0.075]



Part Number	ΦD1	ΦD2	L1	L2
QC2-FL2G-P30-09	1.67 [0.066]	0.3 [0.012]	1.4 [0.055]	1.5 [0.059]
QC2-FL2G-P30-10	1.67 [0.066]	0.3 [0.012]	3 [1.18]	1.5 [0.059]
QC2-FL2G-P60-11	2 [0.079]	0.6 [0.024]	6.35 [0.25]	1.27 [0.05]
QC2-FL2G-P60-12	2 [0.079]	0.6 [0.024]	5.1 [0.201]	1.9 [0.075]

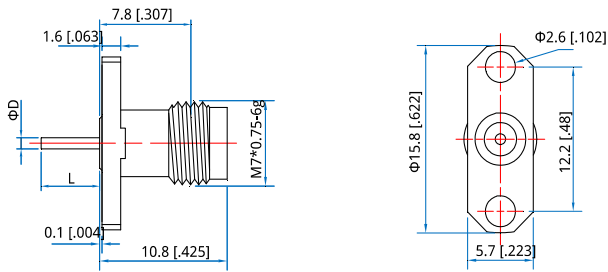


Part Number	ΦD1	ΦD2	L1	L2
QC2-FL4G-P30-01	1.67 [0.066]	0.3 [0.012]	1.4 [0.055]	1.5 [0.059]
QC2-FL4G-P30-02	1.67 [0.066]	0.3 [0.012]	3 [1.18]	1.5 [0.059]
QC2-FL4G-P60-03	2 [0.079]	0.6 [0.024]	6.35 [0.25]	1.27 [0.05]
QC2-FL4G-P60-04	2 [0.079]	0.6 [0.024]	5.1 [0.201]	1.9 [0.075]

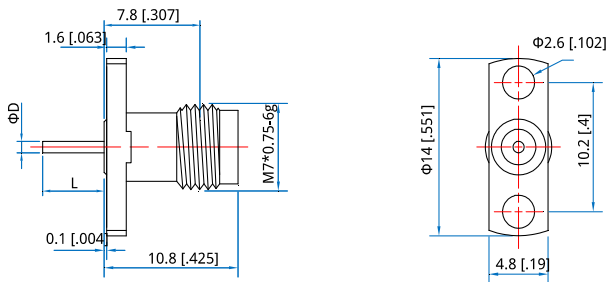


Part Number	ΦD1	ΦD2	L1	L2
QC2-FL4G-P30-05	1.67 [0.066]	0.3 [0.012]	1.4 [0.055]	1.5 [0.059]
QC2-FL4G-P30-06	1.67 [0.066]	0.3 [0.012]	3 [1.18]	1.5 [0.059]
QC2-FL4G-P60-07	2 [0.079]	0.6 [0.024]	6.35 [0.25]	1.27 [0.05]
QC2-FL4G-P60-08	2 [0.079]	0.6 [0.024]	5.1 [0.201]	1.9 [0.075]

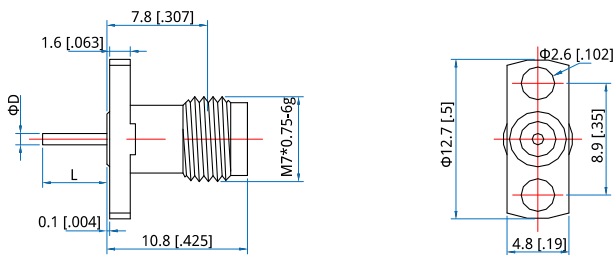
Outline Drawings - 2.4mm Straight Terminal Without Dielectric Connectors



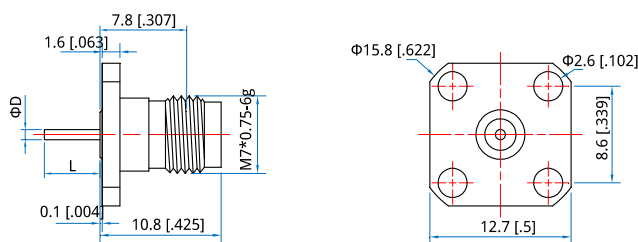
Part Number	ΦD	L
QC2-FL2G-D64-01	0.64 [.025]	10 [.394]
QC2-FL2G-D64-02	0.64 [.025]	6.84 [.269]
QC2-FL2G-D75-03	0.75 [.029]	9 [.354]
QC2-FL2G-D86-04	0.86 [.034]	8.75 [.344]
QC2-FL2G-D100-05	1 [.04]	5.5 [.216]
QC2-FL2G-D104-06	1.04 [.041]	6.34 [.25]
QC2-FL2G-D120-07	1.2 [.047]	3 [.118]



Part Number	ΦD	L
QC2-FL2G-D64-08	0.64 [.025]	10 [.394]
QC2-FL2G-D64-09	0.64 [.025]	6.84 [.269]
QC2-FL2G-D75-10	0.75 [.029]	9 [.354]
QC2-FL2G-D86-11	0.86 [.034]	8.75 [.344]
QC2-FL2G-D100-12	1 [.04]	5.5 [.216]
QC2-FL2G-D104-13	1.04 [.041]	6.34 [.25]
QC2-FL2G-D120-14	1.2 [.047]	3 [.118]

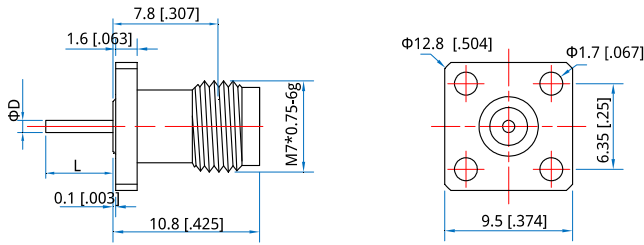


Part Number	ΦD	L
QC2-FL2G-D64-15	0.64 [.025]	10 [.394]
QC2-FL2G-D64-16	0.64 [.025]	6.84 [.269]
QC2-FL2G-D75-17	0.75 [.029]	9 [.354]
QC2-FL2G-D86-18	0.86 [.034]	8.75 [.344]
QC2-FL2G-D100-19	1 [.04]	5.5 [.216]
QC2-FL2G-D104-20	1.04 [.041]	6.34 [.25]
QC2-FL2G-D120-21	1.2 [.047]	3 [.118]

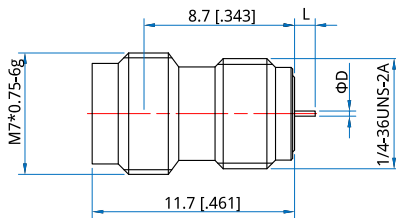


Part Number	ΦD	L
QC2-FL4G-D64-01	0.64 [.025]	10 [.394]
QC2-FL4G-D64-02	0.64 [.025]	6.84 [.269]
QC2-FL4G-D75-03	0.75 [.029]	9 [.354]
QC2-FL4G-D86-04	0.86 [.034]	8.75 [.344]
QC2-FL4G-D100-05	1 [.04]	5.5 [.216]
QC2-FL4G-D104-06	1.04 [.041]	6.34 [.25]
QC2-FL4G-D120-07	1.2 [.047]	3 [.118]

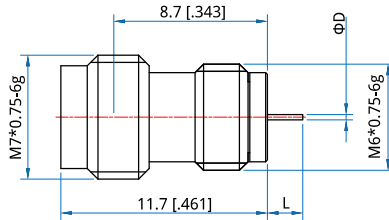
Outline Drawings - 2.4mm Straight Terminal Without Dielectric Connectors



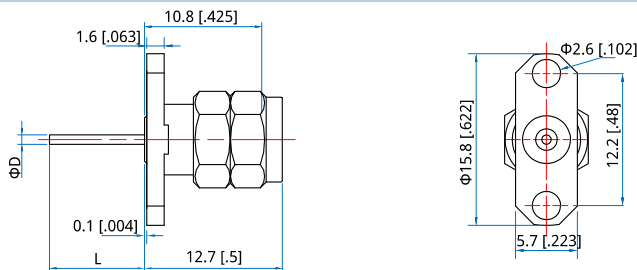
Part Number	ΦD	L
QC2-FL4G-D64-08	0.64 [.025]	10 [.394]
QC2-FL4G-D64-09	0.64 [.025]	6.84 [.269]
QC2-FL4G-D75-10	0.75 [.029]	9 [.354]
QC2-FL4G-D86-11	0.86 [.034]	8.75 [.344]
QC2-FL4G-D100-12	1 [.04]	5.5 [.216]
QC2-FL4G-D104-13	1.04 [.041]	6.34 [.25]
QC2-FL4G-D120-14	1.2 [.047]	3 [.118]



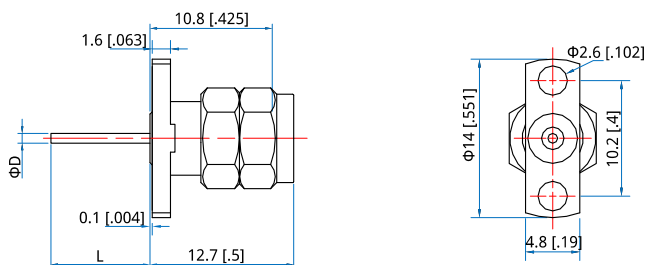
Part Number	ΦD	L
QC2-FYG-D30-01	0.3 [.012]	1.2 [.047]
QC2-FYG-D30-02	0.3 [.012]	2 [.079]



Part Number	ΦD	L
QC2-FYG-D30-03	0.3 [.012]	1.2 [.047]
QC2-FYG-D30-04	0.3 [.012]	2 [.079]

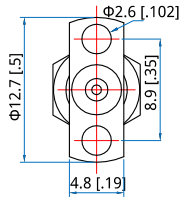
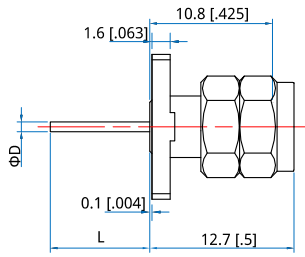


Part Number	ΦD	L
QC2-ML2G-D64-01	0.64 [.025]	10 [.394]
QC2-ML2G-D86-02	0.86 [.034]	8.75 [.344]

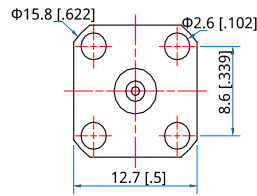
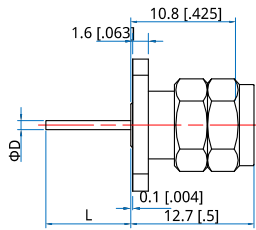


Part Number	ΦD	L
QC2-ML2G-D64-03	0.64 [.025]	10 [.394]
QC2-ML2G-D86-04	0.86 [.034]	8.75 [.344]

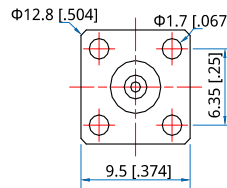
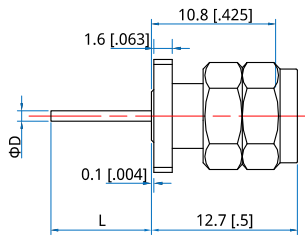
Outline Drawings - 2.4mm Straight Terminal Without Dielectric Connectors



Part Number	ΦD	L
QC2-ML2G-D64-05	0.64 [0.025]	10 [3.94]
QC2-ML2G-D86-06	0.86 [0.034]	8.75 [3.44]



Part Number	ΦD	L
QC2-ML4G-D64-01	0.64 [0.025]	10 [3.94]
QC2-ML4G-D86-02	0.86 [0.034]	8.75 [3.44]



Part Number	ΦD	L
QC2-ML4G-D64-03	0.64 [0.025]	10 [3.94]
QC2-ML4G-D86-04	0.86 [0.034]	8.75 [3.44]

Electrical

Frequency: DC~40GHz
 VSWR: 1.15 max.
 Impedance of Dielectric: 3000MΩ min.
 Impedance of Inner Conduct: 3mΩ max.
 or:
 Impedance of Outer Conduct: 2mΩ max.
 or:
 Voltage Withstand: 750V DC
 Impedance: 50Ω

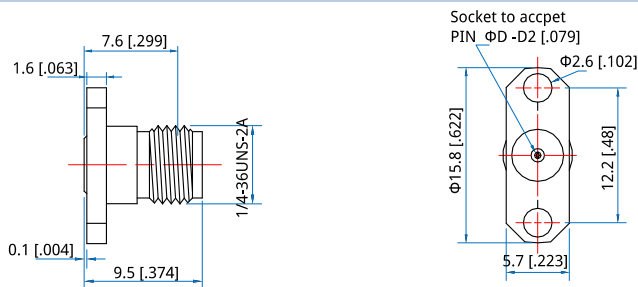
Mechanical

RF Connector: 2.92mm
 Mating Life Cycle: 500 cycles
 Outer Conductor: Passivated SUS303 stainless steel
 Dielectric: PEI or PEI & PTFE
 Inner Conductor: Gold plated beryllium copper

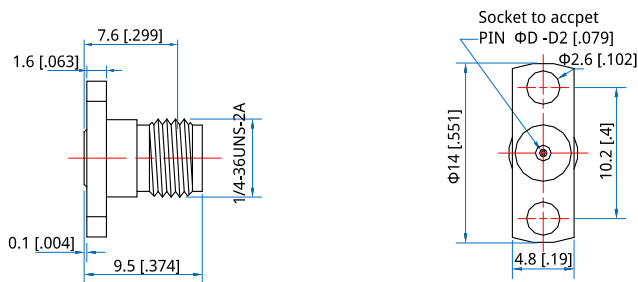
Environmental

Temperature: -55~+165°C

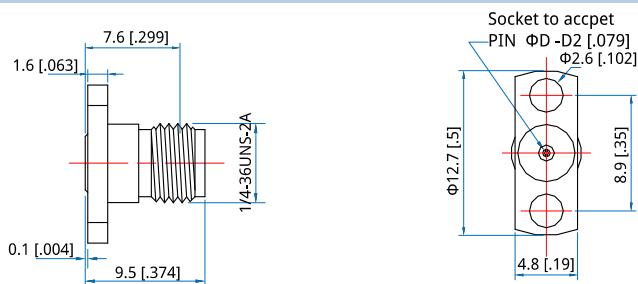
Outline Drawings - 2.92mm Field Replaceable Connectors



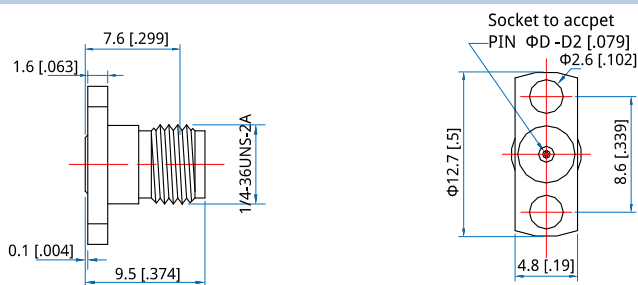
Part Number	ΦD
QCK-FL2G-S23-01	Φ0.23 [.009]
QCK-FL2G-S30-01	Φ0.3 [.012]
QCK-FL2G-S38-01	Φ0.38 [.015]
QCK-FL2G-S46-01	Φ0.46 [.018]
QCK-FL2G-S51-01	Φ0.51 [.02]



Part Number	ΦD
QCK-FL2G-S23-02	Φ0.23 [.009]
QCK-FL2G-S30-02	Φ0.3 [.012]
QCK-FL2G-S38-02	Φ0.38 [.015]
QCK-FL2G-S46-02	Φ0.46 [.018]
QCK-FL2G-S51-02	Φ0.51 [.02]

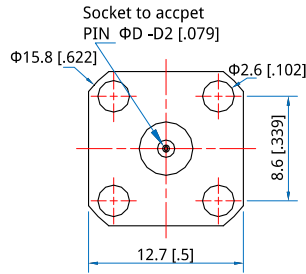
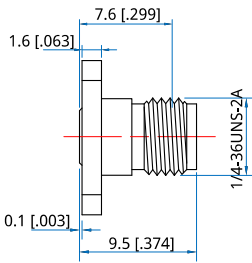


Part Number	ΦD
QCK-FL2G-S23-03	Φ0.23 [.009]
QCK-FL2G-S30-03	Φ0.3 [.012]
QCK-FL2G-S38-03	Φ0.38 [.015]
QCK-FL2G-S46-03	Φ0.46 [.018]
QCK-FL2G-S51-03	Φ0.51 [.02]

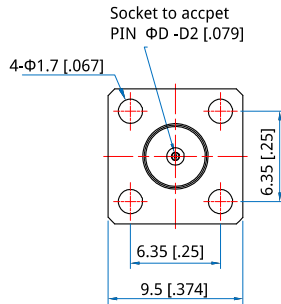
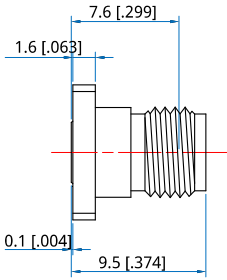


Part Number	ΦD
QCK-FL2G-S23-04	Φ0.23 [.009]
QCK-FL2G-S30-04	Φ0.3 [.012]
QCK-FL2G-S38-04	Φ0.38 [.015]
QCK-FL2G-S46-04	Φ0.46 [.018]
QCK-FL2G-S51-04	Φ0.51 [.02]

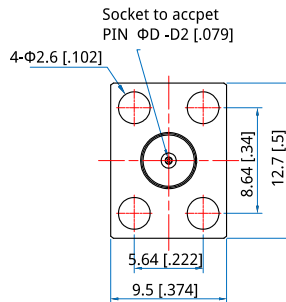
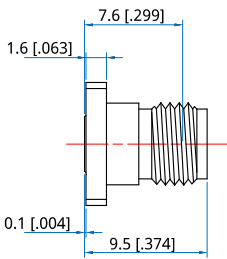
Outline Drawings - 2.92mm Field Replaceable Connectors



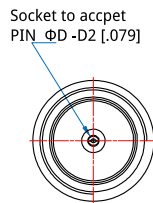
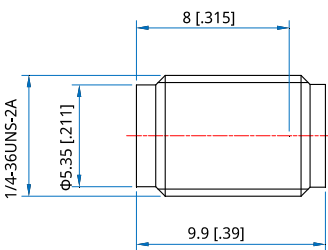
Part Number	ΦD
QCK-FL4G-S23-01	Φ0.23 [.009]
QCK-FL4G-S30-01	Φ0.3 [.012]
QCK-FL4G-S38-01	Φ0.38 [.015]
QCK-FL4G-S46-01	Φ0.46 [.018]
QCK-FL4G-S51-01	Φ0.51 [.02]



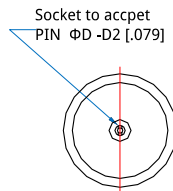
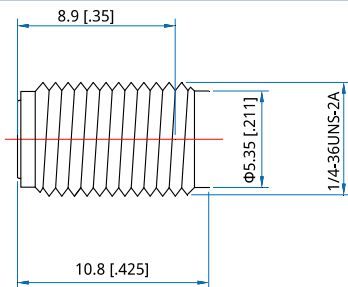
Part Number	ΦD
QCK-FL4G-S23-02	Φ0.23 [.009]
QCK-FL4G-S30-02	Φ0.3 [.012]
QCK-FL4G-S38-02	Φ0.38 [.015]
QCK-FL4G-S46-02	Φ0.46 [.018]
QCK-FL4G-S51-02	Φ0.51 [.02]



Part Number	ΦD
QCK-FL4G-S23-03	Φ0.23 [.009]
QCK-FL4G-S30-03	Φ0.3 [.012]
QCK-FL4G-S38-03	Φ0.38 [.015]
QCK-FL4G-S46-03	Φ0.46 [.018]
QCK-FL4G-S51-03	Φ0.51 [.02]

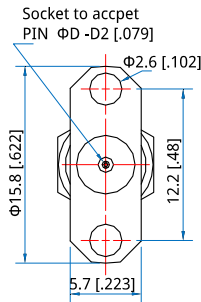
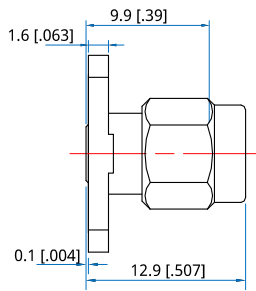


Part Number	ΦD
QCK-FYG-S23-01	Φ0.23 [.009]
QCK-FYG-S30-01	Φ0.3 [.012]
QCK-FYG-S38-01	Φ0.38 [.015]
QCK-FYG-S46-01	Φ0.46 [.018]
QCK-FYG-S51-01	Φ0.51 [.02]

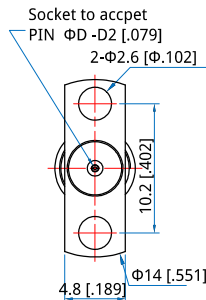
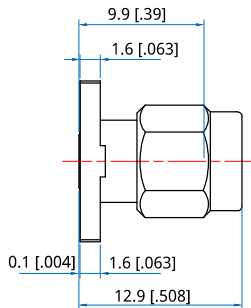


Part Number	ΦD
QCK-FYG-S23-02	Φ0.23 [.009]
QCK-FYG-S30-02	Φ0.3 [.012]
QCK-FYG-S38-02	Φ0.38 [.015]
QCK-FYG-S46-02	Φ0.46 [.018]
QCK-FYG-S51-02	Φ0.51 [.02]

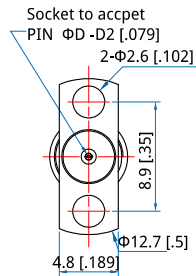
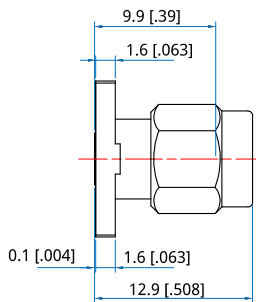
Outline Drawings - 2.92mm Field Replaceable Connectors



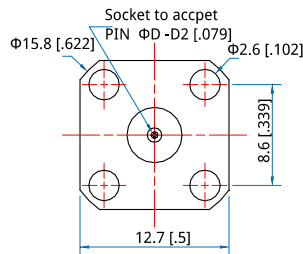
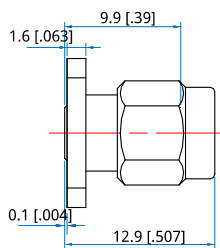
Part Number	ΦD
QCK-ML2G-S23-01	Φ0.23 [.009]
QCK-ML2G-S30-01	Φ0.3 [.012]
QCK-ML2G-S38-01	Φ0.38 [.015]
QCK-ML2G-S46-01	Φ0.46 [.018]
QCK-ML2G-S51-01	Φ0.51 [.02]



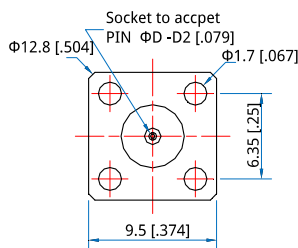
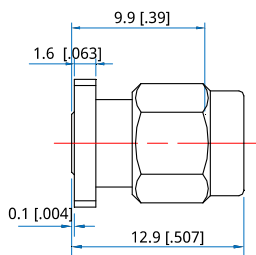
Part Number	ΦD
QCK-ML2G-S23-02	Φ0.23 [.009]
QCK-ML2G-S30-02	Φ0.3 [.012]
QCK-ML2G-S38-02	Φ0.38 [.015]
QCK-ML2G-S46-02	Φ0.46 [.018]
QCK-ML2G-S51-02	Φ0.51 [.02]



Part Number	ΦD
QCK-ML2G-S23-03	Φ0.23 [.009]
QCK-ML2G-S30-03	Φ0.3 [.012]
QCK-ML2G-S38-03	Φ0.38 [.015]
QCK-ML2G-S46-03	Φ0.46 [.018]
QCK-ML2G-S51-03	Φ0.51 [.02]

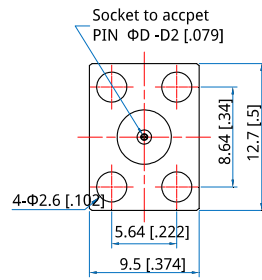
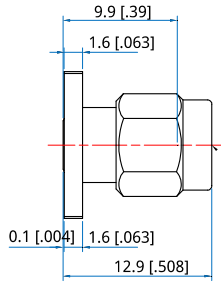


Part Number	ΦD
QCK-ML4G-S23-01	Φ0.23 [.009]
QCK-ML4G-S30-01	Φ0.3 [.012]
QCK-ML4G-S38-01	Φ0.38 [.015]
QCK-ML4G-S46-01	Φ0.46 [.018]
QCK-ML4G-S51-01	Φ0.51 [.02]



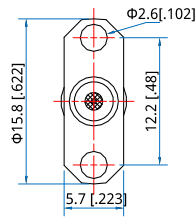
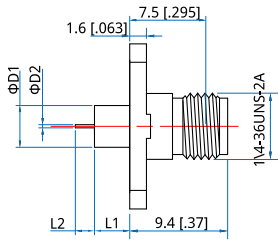
Part Number	ΦD
QCK-ML4G-S23-02	Φ0.23 [.009]
QCK-ML4G-S30-02	Φ0.3 [.012]
QCK-ML4G-S38-02	Φ0.38 [.015]
QCK-ML4G-S46-02	Φ0.46 [.018]
QCK-ML4G-S51-02	Φ0.51 [.02]

Outline Drawings - 2.92mm Field Replaceable Connectors

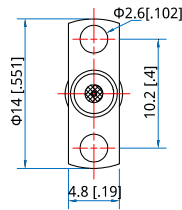
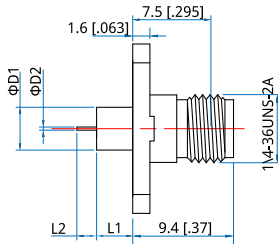


Part Number	ΦD
QCK-ML4G-S23-03	$\Phi 0.23$ [.009]
QCK-ML4G-S30-03	$\Phi 0.3$ [.012]
QCK-ML4G-S38-03	$\Phi 0.38$ [.015]
QCK-ML4G-S46-03	$\Phi 0.46$ [.018]
QCK-ML4G-S51-03	$\Phi 0.51$ [.02]

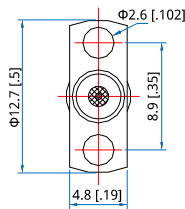
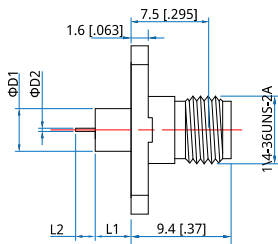
Outline Drawings - 2.92mm Straight Terminal With Metal Connectors



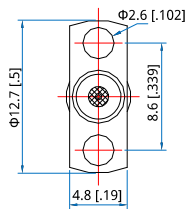
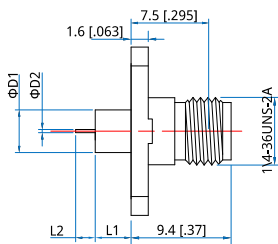
Part Number	ΦD1	ΦD2	L1	L2
QCK-FL2G-M30-01	4 [.158]	0.3 [.012]	1.4 [.055]	1.5 [.059]
QCK-FL2G-M30-02	4 [.158]	0.3 [.012]	3 [.118]	1.5 [.059]
QCK-FL2G-M60-03	4 [.158]	0.6 [.024]	10.1 [.398]	1.27 [.05]
QCK-FL2G-M30-04	4 [.158]	0.3 [.012]	3.2 [.126]	1.5 [.059]



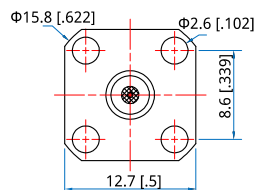
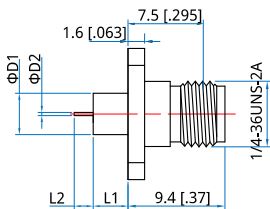
Part Number	ΦD1	ΦD2	L1	L2
QCK-FL2G-M30-05	4 [.158]	0.3 [.012]	1.4 [.055]	1.5 [.059]
QCK-FL2G-M30-06	4 [.158]	0.3 [.012]	3 [.118]	1.5 [.059]
QCK-FL2G-M60-07	4 [.158]	0.6 [.024]	10.1 [.398]	1.27 [.05]
QCK-FL2G-M30-08	4 [.158]	0.3 [.012]	3.2 [.126]	1.5 [.059]



Part Number	ΦD1	ΦD2	L1	L2
QCK-FL2G-M30-09	4 [.158]	0.3 [.012]	1.4 [.055]	1.5 [.059]
QCK-FL2G-M30-10	4 [.158]	0.3 [.012]	3 [.118]	1.5 [.059]
QCK-FL2G-M60-11	4 [.158]	0.6 [.024]	10.1 [.398]	1.27 [.05]
QCK-FL2G-M30-12	4 [.158]	0.3 [.012]	3.2 [.126]	1.5 [.059]

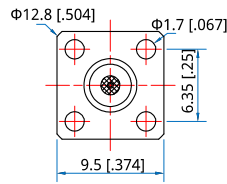
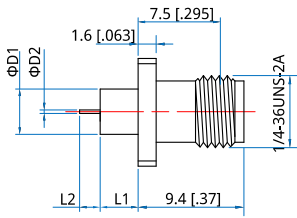


Part Number	ΦD1	ΦD2	L1	L2
QCK-FL2G-M30-13	4 [.158]	0.3 [.012]	1.4 [.055]	1.5 [.059]
QCK-FL2G-M30-14	4 [.158]	0.3 [.012]	3 [.118]	1.5 [.059]
QCK-FL2G-M60-15	4 [.158]	0.6 [.024]	10.1 [.398]	1.27 [.05]
QCK-FL2G-M30-16	4 [.158]	0.3 [.012]	3.2 [.126]	1.5 [.059]

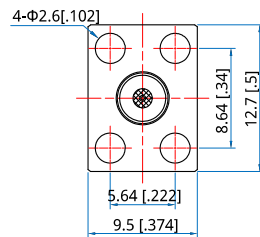
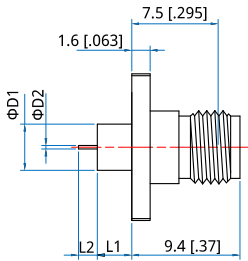


Part Number	ΦD1	ΦD2	L1	L2
QCK-FL4G-M30-01	4 [.158]	0.3 [.012]	1.4 [.055]	1.5 [.059]
QCK-FL4G-M30-02	4 [.158]	0.3 [.012]	3 [.118]	1.5 [.059]
QCK-FL4G-M60-03	4 [.158]	0.6 [.024]	10.1 [.398]	1.27 [.05]
QCK-FL4G-M30-04	4 [.158]	0.3 [.012]	3.2 [.126]	1.5 [.059]

Outline Drawings - 2.92mm Straight Terminal With Metal Connectors

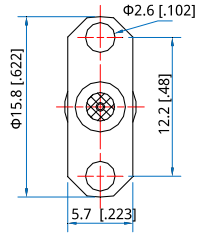
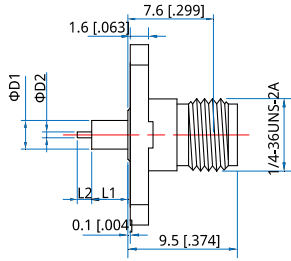


Part Number	ΦD1	ΦD2	L1	L2
QCK-FL4G-M30-05	4 [.158]	0.3 [.012]	1.4 [.055]	1.5 [.059]
QCK-FL4G-M30-06	4 [.158]	0.3 [.012]	3 [.118]	1.5 [.059]
QCK-FL4G-M60-07	4 [.158]	0.6 [.024]	10.1 [.398]	1.27 [.05]
QCK-FL4G-M30-08	4 [.158]	0.3 [.012]	3.2 [.126]	1.5 [.059]

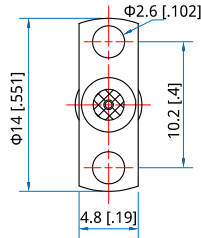
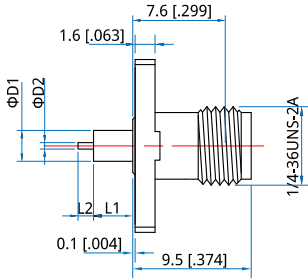


Part Number	ΦD1	ΦD2	L1	L2
QCK-FL4G-M30-09	4 [.158]	0.3 [.012]	1.4 [.055]	1.5 [.059]
QCK-FL4G-M30-10	4 [.158]	0.3 [.012]	3 [.118]	1.5 [.059]
QCK-FL4G-M60-11	4 [.158]	0.6 [.024]	10.1 [.398]	1.27 [.05]
QCK-FL4G-M30-12	4 [.158]	0.3 [.012]	3.2 [.126]	1.5 [.059]

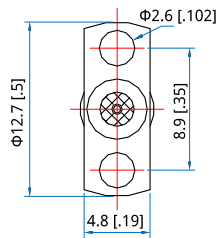
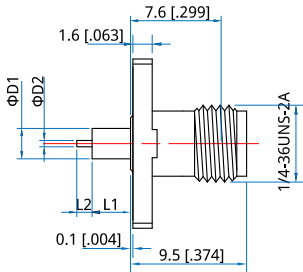
Outline Drawings - 2.92mm Straight Terminal With Dielectric Connectors



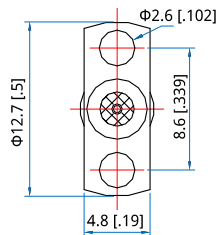
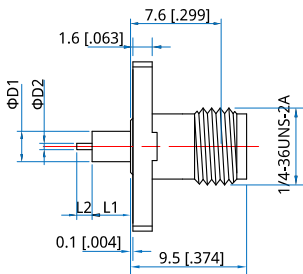
Part Number	ΦD1	ΦD2	L1	L2
QCK-FL2G-P30-01	1.67 [.066]	0.3 [.012]	1.4 [.055]	1.5 [.059]
QCK-FL2G-P30-02	1.67 [.066]	0.3 [.012]	3 [.118]	1.5 [.059]
QCK-FL2G-P30-03	1.67 [.066]	0.3 [.012]	3 [.118]	4.5 [.177]



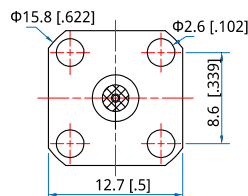
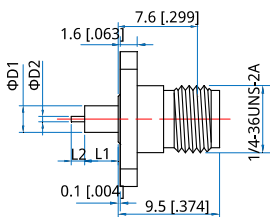
Part Number	ΦD1	ΦD2	L1	L2
QCK-FL2G-P30-04	1.67 [.066]	0.3 [.012]	1.4 [.055]	1.5 [.059]
QCK-FL2G-P30-05	1.67 [.066]	0.3 [.012]	3 [.118]	1.5 [.059]
QCK-FL2G-P30-06	1.67 [.066]	0.3 [.012]	3 [.118]	4.5 [.177]



Part Number	ΦD1	ΦD2	L1	L2
QCK-FL2G-P30-07	1.67 [.066]	0.3 [.012]	1.4 [.055]	1.5 [.059]
QCK-FL2G-P30-08	1.67 [.066]	0.3 [.012]	3 [.118]	1.5 [.059]
QCK-FL2G-P30-09	1.67 [.066]	0.3 [.012]	3 [.118]	4.5 [.177]

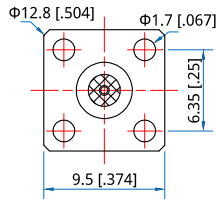
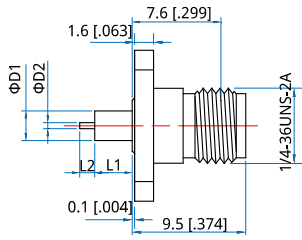


Part Number	ΦD1	ΦD2	L1	L2
QCK-FL2G-P30-10	1.67 [.066]	0.3 [.012]	1.4 [.055]	1.5 [.059]
QCK-FL2G-P30-11	1.67 [.066]	0.3 [.012]	3 [.118]	1.5 [.059]
QCK-FL2G-P30-12	1.67 [.066]	0.3 [.012]	3 [.118]	4.5 [.177]

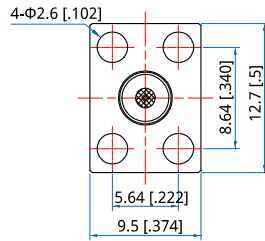
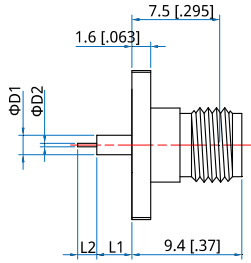


Part Number	ΦD1	ΦD2	L1	L2
QCK-FL4G-P30-01	1.67 [.066]	0.3 [.012]	1.4 [.055]	1.5 [.059]
QCK-FL4G-P30-02	1.67 [.066]	0.3 [.012]	3 [.118]	1.5 [.059]
QCK-FL4G-P30-03	1.67 [.066]	0.3 [.012]	3 [.118]	4.5 [.177]

Outline Drawings - 2.92mm Straight Terminal With Dielectric Connectors

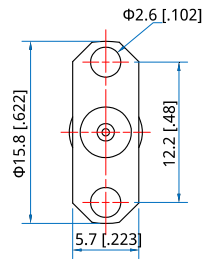
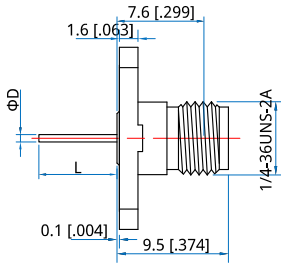


Part Number	ΦD1	ΦD2	L1	L2
QCK-FL4G-P30-04	1.67 [0.066]	0.3 [0.012]	1.4 [0.055]	1.5 [0.059]
QCK-FL4G-P30-05	1.67 [0.066]	0.3 [0.012]	3 [1.18]	1.5 [0.059]
QCK-FL4G-P30-06	1.67 [0.066]	0.3 [0.012]	3 [1.18]	4.5 [1.77]

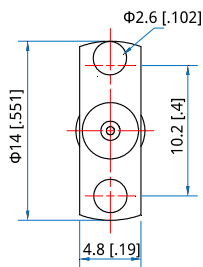
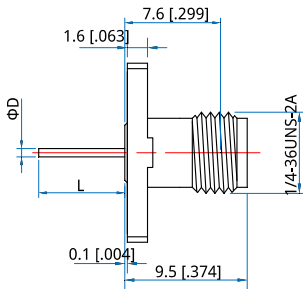


Part Number	ΦD1	ΦD2	L1	L2
QCK-FL4G-P30-07	1.67 [0.066]	0.3 [0.012]	1.4 [0.055]	1.5 [0.059]
QCK-FL4G-P30-08	1.67 [0.066]	0.3 [0.012]	3 [1.18]	1.5 [0.059]
QCK-FL4G-P30-09	1.67 [0.066]	0.3 [0.012]	3 [1.18]	4.5 [1.77]

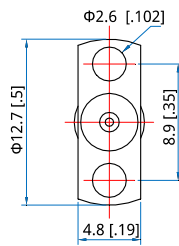
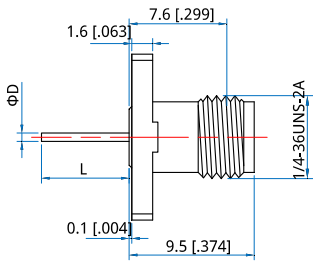
Outline Drawings - 2.92mm Straight Terminal Without Dielectric Connectors



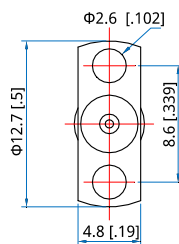
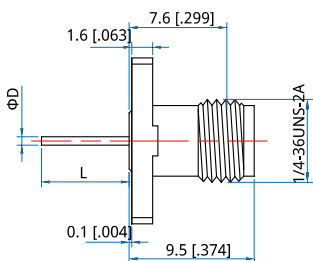
Part Number	ΦD	L
QCK-FL2G-D64-01	0.64 [.025]	10.92 [.43]
QCK-FL2G-D64-02	0.64 [.025]	6.84 [.269]
QCK-FL2G-D30-03	0.3 [.012]	7 [.276]
QCK-FL2G-D30-04	0.3 [.012]	2 [.079]
QCK-FL2G-D75-05	0.75 [.03]	30 [1.181]



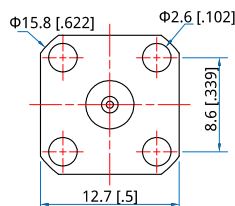
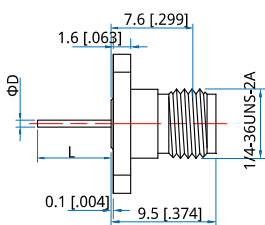
Part Number	ΦD	L
QCK-FL2G-D64-06	0.64 [.025]	10.92 [.43]
QCK-FL2G-D64-07	0.64 [.025]	6.84 [.269]
QCK-FL2G-D30-08	0.3 [.012]	7 [.276]
QCK-FL2G-D30-09	0.3 [.012]	2 [.079]
QCK-FL2G-D75-10	0.75 [.03]	30 [1.181]



Part Number	ΦD	L
QCK-FL2G-D64-11	0.64 [.025]	10.92 [.43]
QCK-FL2G-D64-12	0.64 [.025]	6.84 [.269]
QCK-FL2G-D30-13	0.3 [.012]	7 [.276]
QCK-FL2G-D30-14	0.3 [.012]	2 [.079]
QCK-FL2G-D75-15	0.75 [.03]	30 [1.181]

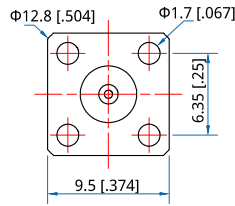
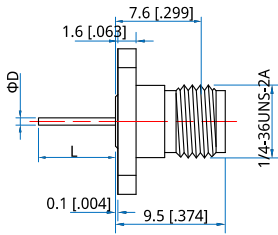


Part Number	ΦD	L
QCK-FL2G-D64-16	0.64 [.025]	10.92 [.43]
QCK-FL2G-D64-17	0.64 [.025]	6.84 [.269]
QCK-FL2G-D30-18	0.3 [.012]	7 [.276]
QCK-FL2G-D30-19	0.3 [.012]	2 [.079]
QCK-FL2G-D75-20	0.75 [.03]	30 [1.181]

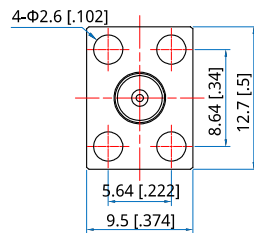
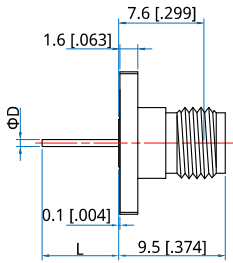


Part Number	ΦD	L
QCK-FL4G-D64-01	0.64 [.025]	10.92 [.43]
QCK-FL4G-D64-02	0.64 [.025]	6.84 [.269]
QCK-FL4G-D30-03	0.3 [.012]	7 [.276]
QCK-FL4G-D30-04	0.3 [.012]	2 [.079]
QCK-FL4G-D75-05	0.75 [.03]	30 [1.181]

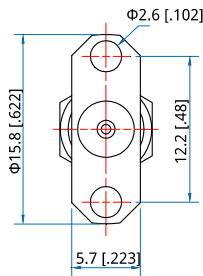
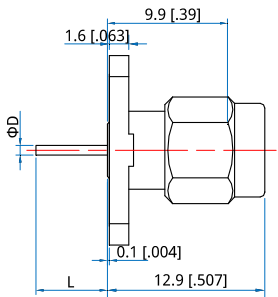
Outline Drawings - 2.92mm Straight Terminal Without Dielectric Connectors



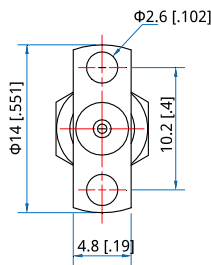
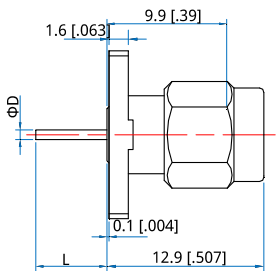
Part Number	ΦD	L
QCK-FL4G-D64-06	0.64 [.025]	10.92 [.43]
QCK-FL4G-D64-07	0.64 [.025]	6.84 [.269]
QCK-FL4G-D30-08	0.3 [.012]	7 [.276]
QCK-FL4G-D30-09	0.3 [.012]	2 [.079]
QCK-FL4G-D75-10	0.75 [.03]	30 [1.181]



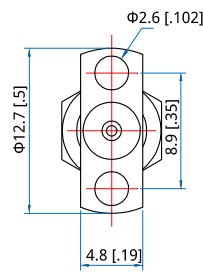
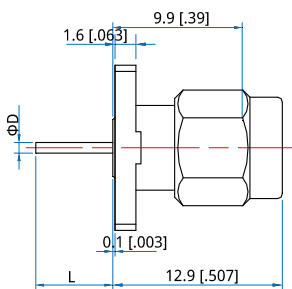
Part Number	ΦD	L
QCK-FL4G-D64-11	0.64 [.025]	10.92 [.43]
QCK-FL4G-D64-12	0.64 [.025]	6.84 [.269]
QCK-FL4G-D30-13	0.3 [.012]	7 [.276]
QCK-FL4G-D30-14	0.3 [.012]	2 [.079]
QCK-FL4G-D75-15	0.75 [.03]	30 [1.181]



Part Number	ΦD	L
QCK-ML2G-D64-01	0.64 [.025]	10.92 [.43]
QCK-ML2G-D64-02	0.64 [.025]	6.84 [.269]

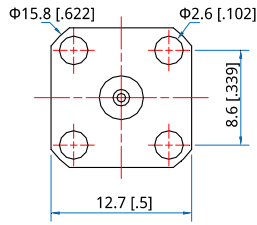
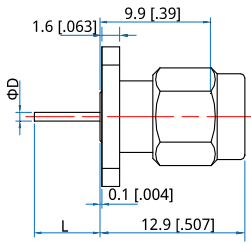


Part Number	ΦD	L
QCK-ML2G-D64-03	0.64 [.025]	10.92 [.43]
QCK-ML2G-D64-04	0.64 [.025]	6.84 [.269]

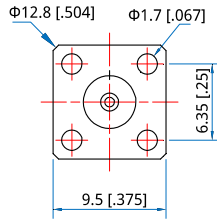
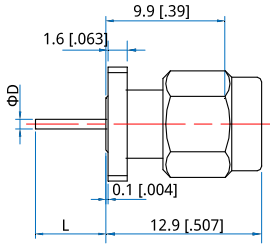


Part Number	ΦD	L
QCK-ML2G-D64-05	0.64 [.025]	10.92 [.43]
QCK-ML2G-D64-06	0.64 [.025]	6.84 [.269]

Outline Drawings - 2.92mm Straight Terminal Without Dielectric Connectors

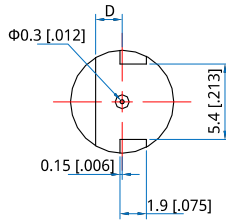
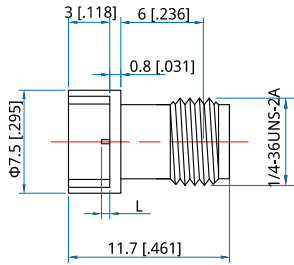


Part Number	ΦD	L
QCK-ML4G-D64-01	0.64 [.025]	10.92 [.43]
QCK-ML4G-D64-02	0.64 [.025]	6.84 [.269]

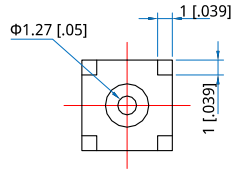
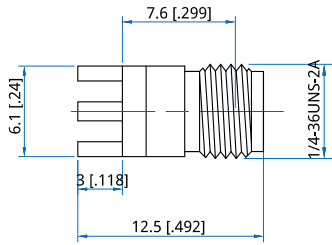


Part Number	ΦD	L
QCK-ML4G-D64-03	0.64 [.025]	10.92 [.43]
QCK-ML4G-D64-04	0.64 [.025]	6.84 [.269]

Outline Drawings - 2.92mm Printed Circuit Board Mount Connector



Part Number	ΦD	L	Plate Thickness
QCK-FB-B30-02	1.93 [.076]	0.6 [.023]	1.78 [.07]
QCK-FB-B30-03	0.76 [.03]	0.6 [.023]	0.61 [.024]
QCK-FB-B30-04	1.02 [.04]	0.6 [.023]	0.87 [.034]
QCK-FB-B30-05	2.45 [.096]	0.6 [.023]	2.3 [.091]



Part Number
QCK-FB-B127-01

Electrical

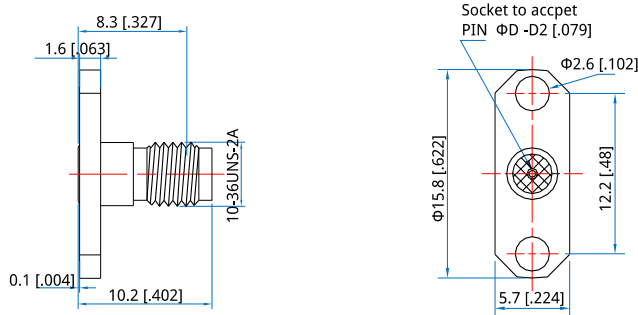
Frequency: DC~40GHz
 VSWR: 1.2 max.
 Impedance of Dielectric: 1000MΩ min.
 Impedance of Inner Conduct: 5mΩ max.
 or:
 Impedance of Outer Conduct: 2.5mΩ max.
 or:
 Voltage Withstand: 750V DC
 Impedance: 50Ω

Mechanical

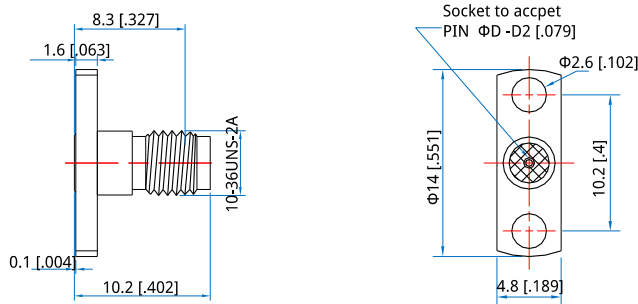
RF Connector: SSMA
 Mating Life Cycle: 500 cycles
 Outer Conductor: Passivated SUS303 stainless steel
 Dielectric: PEI or PTFE
 Inner Conductor: Gold plated beryllium copper

Environmental

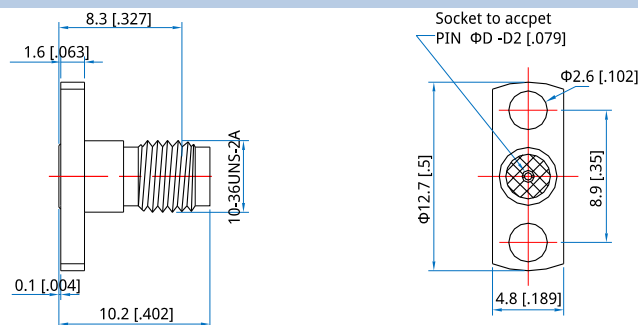
Temperature: -55~+165°C

Outline Drawings - SSMA Field Replaceable Connectors


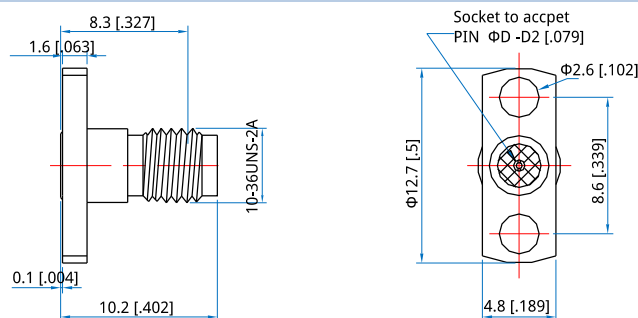
Part Number	ΦD
QCA-FL2G-S23-01	Φ0.23 [009]
QCA-FL2G-S30-01	Φ0.3 [012]
QCA-FL2G-S38-01	Φ0.38 [015]
QCA-FL2G-S46-01	Φ0.46 [018]
QCA-FL2G-S51-01	Φ0.51 [02]



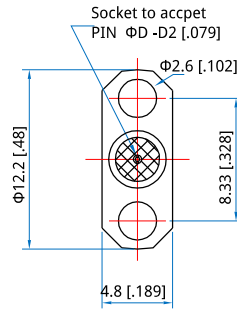
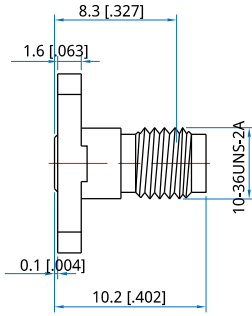
Part Number	ΦD
QCA-FL2G-S23-02	Φ0.23 [009]
QCA-FL2G-S30-02	Φ0.3 [012]
QCA-FL2G-S38-02	Φ0.38 [015]
QCA-FL2G-S46-02	Φ0.46 [018]
QCA-FL2G-S51-02	Φ0.51 [02]



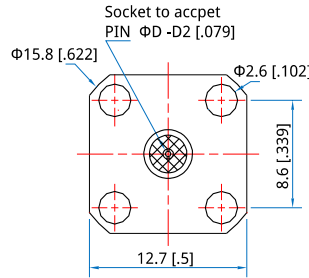
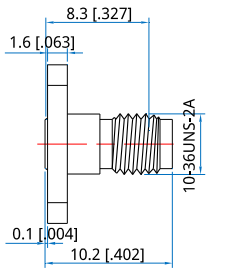
Part Number	ΦD
QCA-FL2G-S23-03	Φ0.23 [009]
QCA-FL2G-S30-03	Φ0.3 [012]
QCA-FL2G-S38-03	Φ0.38 [015]
QCA-FL2G-S46-03	Φ0.46 [018]
QCA-FL2G-S51-03	Φ0.51 [02]



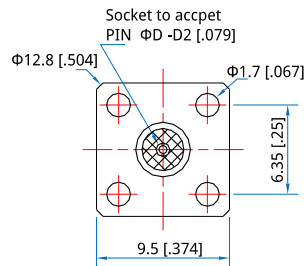
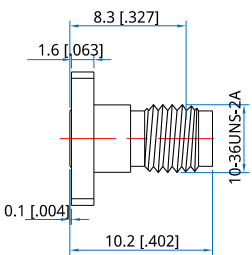
Part Number	ΦD
QCA-FL2G-S23-04	Φ0.23 [009]
QCA-FL2G-S30-04	Φ0.3 [012]
QCA-FL2G-S38-04	Φ0.38 [015]
QCA-FL2G-S46-04	Φ0.46 [018]
QCA-FL2G-S51-04	Φ0.51 [02]

Outline Drawings - SSMA Field Replaceable Connectors


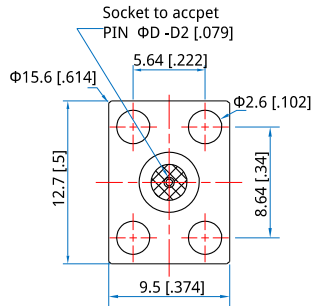
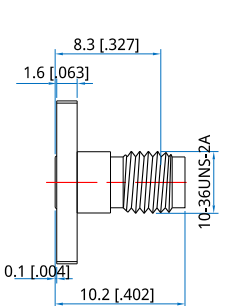
Part Number	ΦD
QCA-FL2G-S23-05	Φ0.23 [0.009]
QCA-FL2G-S30-05	Φ0.3 [0.12]
QCA-FL2G-S38-05	Φ0.38 [0.15]
QCA-FL2G-S46-05	Φ0.46 [0.18]
QCA-FL2G-S51-05	Φ0.51 [0.2]



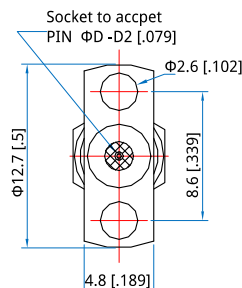
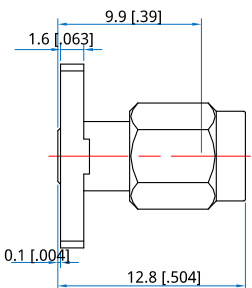
Part Number	ΦD
QCA-FL4G-S23-01	Φ0.23 [0.009]
QCA-FL4G-S30-01	Φ0.3 [0.12]
QCA-FL4G-S38-01	Φ0.38 [0.15]
QCA-FL4G-S46-01	Φ0.46 [0.18]
QCA-FL4G-S51-01	Φ0.51 [0.2]



Part Number	ΦD
QCA-FL4G-S23-02	Φ0.23 [0.009]
QCA-FL4G-S30-02	Φ0.3 [0.12]
QCA-FL4G-S38-02	Φ0.38 [0.15]
QCA-FL4G-S46-02	Φ0.46 [0.18]
QCA-FL4G-S51-02	Φ0.51 [0.2]

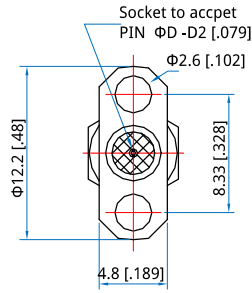
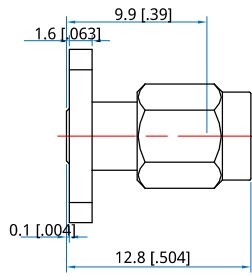


Part Number	ΦD
QCA-FL4G-S23-03	Φ0.23 [0.009]
QCA-FL4G-S30-03	Φ0.3 [0.12]
QCA-FL4G-S38-03	Φ0.38 [0.15]
QCA-FL4G-S46-03	Φ0.46 [0.18]
QCA-FL4G-S51-03	Φ0.51 [0.2]

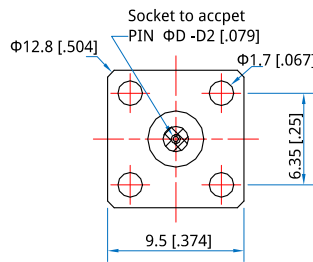
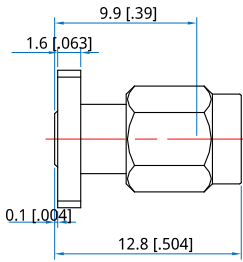


Part Number	ΦD
QCA-ML2G-S23-01	Φ0.23 [0.009]
QCA-ML2G-S30-01	Φ0.3 [0.12]
QCA-ML2G-S38-01	Φ0.38 [0.15]
QCA-ML2G-S46-01	Φ0.46 [0.18]
QCA-ML2G-S51-01	Φ0.51 [0.2]

Outline Drawings - SSMA Field Replaceable Connectors

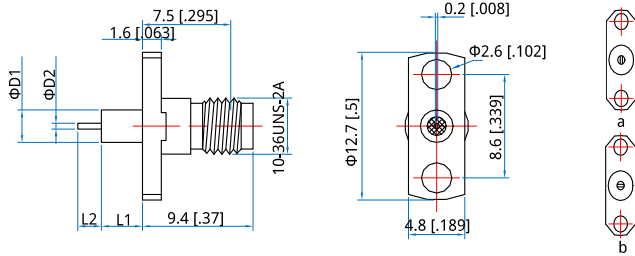


Part Number	ΦD
QCA-ML2G-S23-02	Φ0.23 [.009]
QCA-ML2G-S30-02	Φ0.3 [.012]
QCA-ML2G-S38-02	Φ0.38 [.015]
QCA-ML2G-S46-02	Φ0.46 [.018]
QCA-ML2G-S51-02	Φ0.51 [.02]

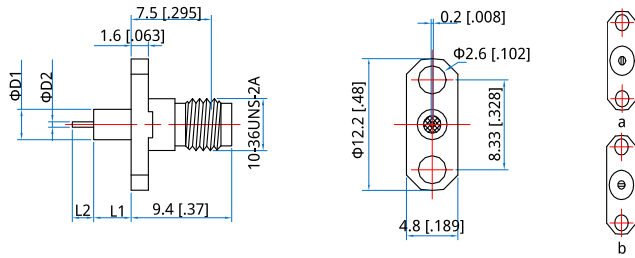


Part Number	ΦD
QCA-ML4G-S23-01	Φ0.23 [.009]
QCA-ML4G-S30-01	Φ0.3 [.012]
QCA-ML4G-S38-01	Φ0.38 [.015]
QCA-ML4G-S46-01	Φ0.46 [.018]
QCA-ML4G-S51-01	Φ0.51 [.02]

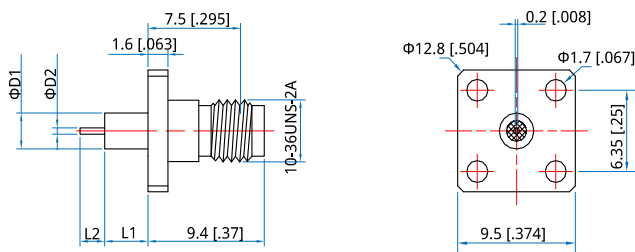
Outline Drawings - SSMA Straight Terminal With Metal Connectors



Part Number	ΦD1	ΦD2	L1	L2	
QCA-FL2G-M60-01	2.8 [.11]	0.6 [.024]	3.1 [.122]	2 [.079]	a
QCA-FL2G-M60-02	2.8 [.11]	0.6 [.024]	3.1 [.122]	2 [.079]	b



Part Number	ΦD1	ΦD2	L1	L2	
QCA-FL2G-M60-03	2.8 [.11]	0.6 [.024]	3.1 [.122]	2 [.079]	a
QCA-FL2G-M60-04	2.8 [.11]	0.6 [.024]	3.1 [.122]	2 [.079]	b



Part Number	ΦD1	ΦD2	L1	L2	
QCA-FL4G-M60-01	2.8 [.11]	0.6 [.024]	3.1 [.122]	2 [.079]	

Electrical

Frequency: DC~40GHz
 VSWR: 1.3 max.
 Impedance of Dielectric: 5000MΩ min.
 Impedance of Inner Conductor: 6mΩ max.
 or:
 Impedance of Outer Conductor: 2mΩ max.
 or:
 Voltage Withstand: 335V DC
 Impedance: 50Ω

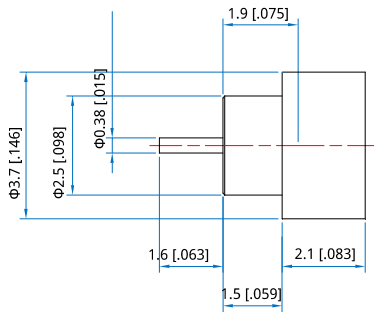
Mechanical

RF Connector: SMP
 Mating Life Cycle: 100 cycles
 Outer Conductor: Passivated SUS303 stainless steel or gold plated kovar material
 Dielectric: PEI&PTFE or PTFE
 Inner Conductor: Gold plated beryllium copper or gold plated kovar material

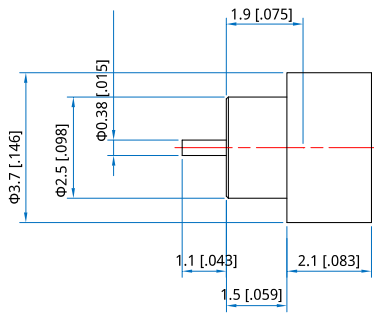
Environmental

Temperature: -55~+165°C

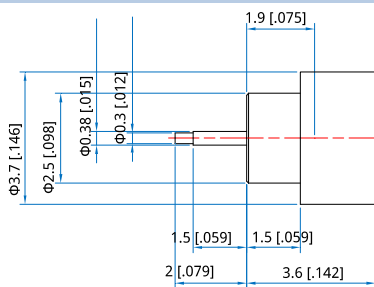
Outline Drawings - SMP Straight Terminal With Metal Connectors



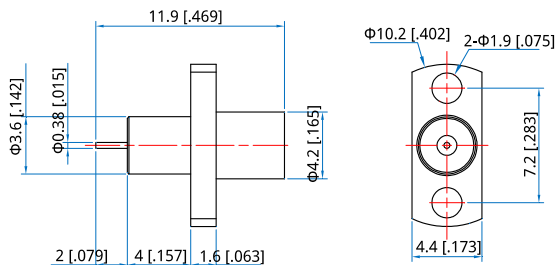
Part Number	
QCPF-MB-M38-01	Full Detent



Part Number	
QCPF-MB-M38-02	Full Detent

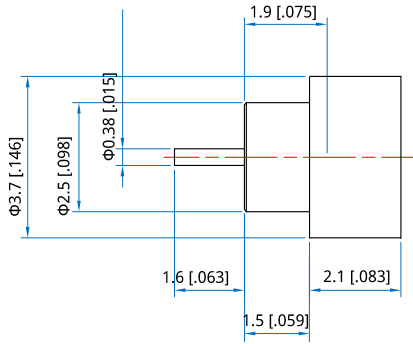


Part Number	
QCPF-MB-M38-03	Full Detent

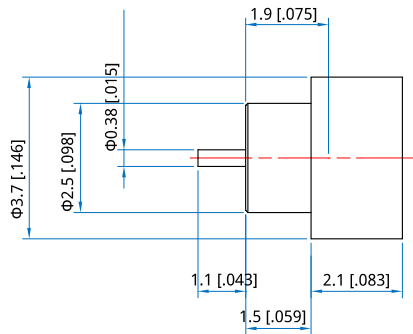


Part Number	
QCPF-ML2G-M38-01	Full Detent

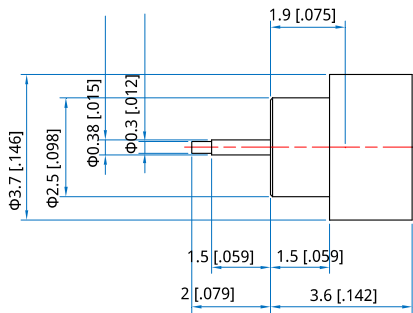
Outline Drawings - SMP Straight Terminal With Metal Connectors



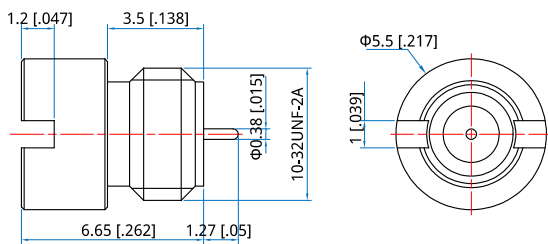
Part Number	
QCPL-MB-M38-01	Limited Detent



Part Number	
QCPL-MB-M38-02	Limited Detent



Part Number	
QCPL-MB-M38-03	Limited Detent



Part Number	
QCPL-MYB-M38-01	Limited Detent

Electrical

Frequency: DC~26.5GHz
 VSWR: 1.15 max.
 Impedance of Dielectric: 5000MΩ min.
 Impedance of Inner Conduct: 3mΩ max.
 or:
 Impedance of Outer Conduct: 2mΩ max.
 or:
 Voltage Withstand: 100V DC
 Impedance: 50Ω

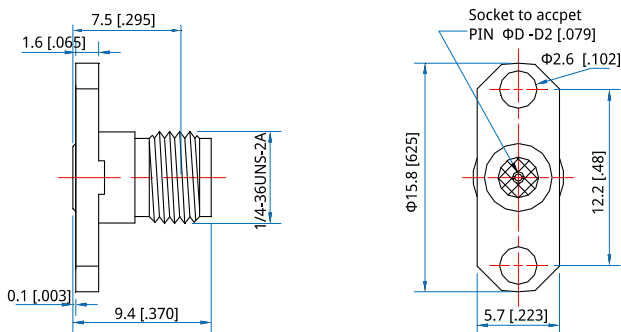
Mechanical

RF Connector: SMA
 Mating Life Cycle: 500 cycles
 Outer Conductor: Passivated SUS303 stainless steel
 Dielectric: PEI&PTFE
 Inner Conductor: Gold plated beryllium copper

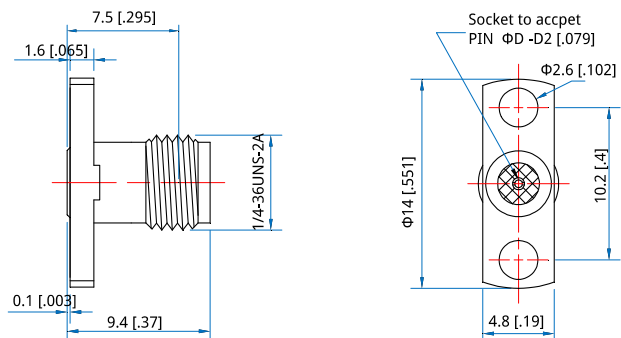
Environmental

Temperature: -55~+165°C

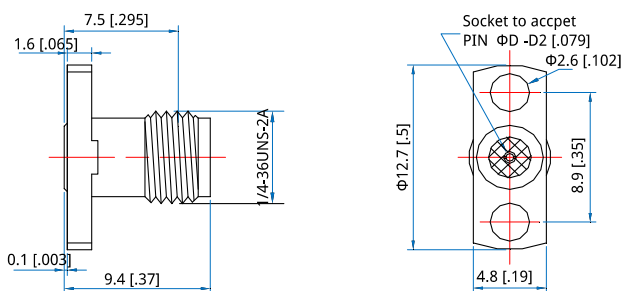
Outline Drawings - SMA Field Replaceable Connectors



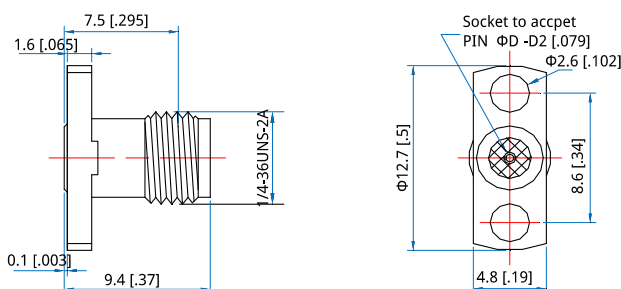
Part Number	ΦD
QCS-FL2G-S23-01	Φ0.23 [009]
QCS-FL2G-S30-01	Φ0.3 [012]
QCS-FL2G-S38-01	Φ0.38 [015]
QCS-FL2G-S46-01	Φ0.46 [018]
QCS-FL2G-S51-01	Φ0.51 [02]
QCS-FL2G-S91-01	Φ0.91 [036]



Part Number	ΦD
QCS-FL2G-S23-02	Φ0.23 [009]
QCS-FL2G-S30-02	Φ0.3 [012]
QCS-FL2G-S38-02	Φ0.38 [015]
QCS-FL2G-S46-02	Φ0.46 [018]
QCS-FL2G-S51-02	Φ0.51 [02]
QCS-FL2G-S91-02	Φ0.91 [036]

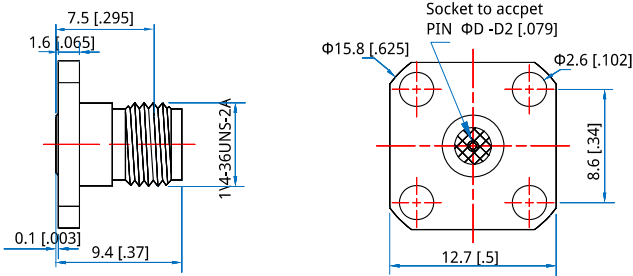


Part Number	ΦD
QCS-FL2G-S23-03	Φ0.23 [009]
QCS-FL2G-S30-03	Φ0.3 [012]
QCS-FL2G-S38-03	Φ0.38 [015]
QCS-FL2G-S46-03	Φ0.46 [018]
QCS-FL2G-S51-03	Φ0.51 [02]
QCS-FL2G-S91-03	Φ0.91 [036]

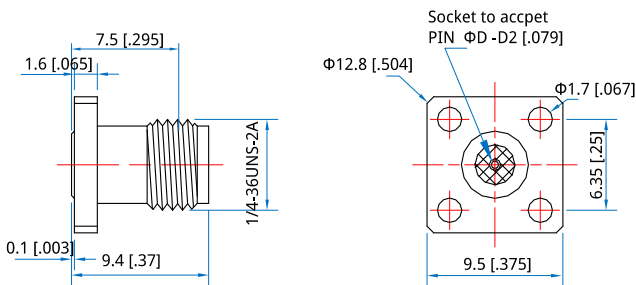


Part Number	ΦD
QCS-FL2G-S23-04	Φ0.23 [009]
QCS-FL2G-S30-04	Φ0.3 [012]
QCS-FL2G-S38-04	Φ0.38 [015]
QCS-FL2G-S46-04	Φ0.46 [018]
QCS-FL2G-S51-04	Φ0.51 [02]
QCS-FL2G-S91-04	Φ0.91 [036]

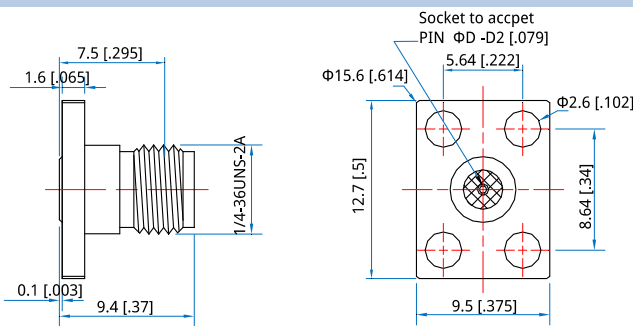
Outline Drawings - SMA Field Replaceable Connectors



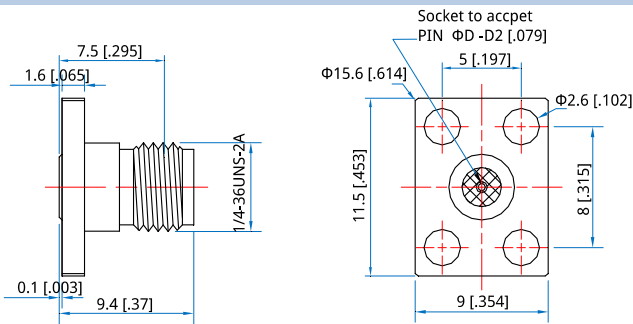
Part Number	ΦD
QCS-FL4G-S23-01	Φ0.23 [.009]
QCS-FL4G-S30-01	Φ0.3 [.012]
QCS-FL4G-S38-01	Φ0.38 [.015]
QCS-FL4G-S46-01	Φ0.46 [.018]
QCS-FL4G-S51-01	Φ0.51 [.02]
QCS-FL4G-S91-01	Φ0.91 [.036]



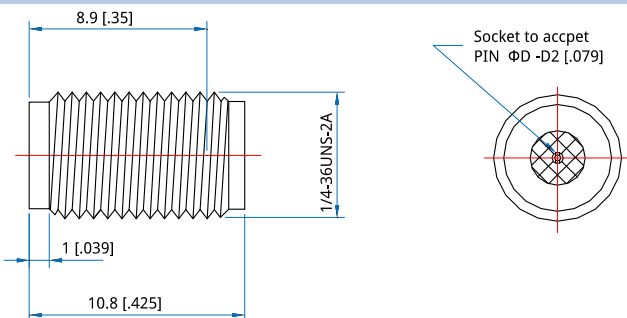
Part Number	ΦD
QCS-FL4G-S23-02	Φ0.23 [.009]
QCS-FL4G-S30-02	Φ0.3 [.012]
QCS-FL4G-S38-02	Φ0.38 [.015]
QCS-FL4G-S46-02	Φ0.46 [.018]
QCS-FL4G-S51-02	Φ0.51 [.02]
QCS-FL4G-S91-02	Φ0.91 [.036]



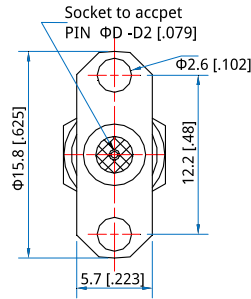
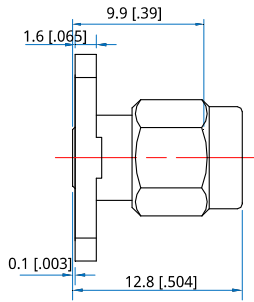
Part Number	ΦD
QCS-FL4G-S23-03	Φ0.23 [.009]
QCS-FL4G-S30-03	Φ0.3 [.012]
QCS-FL4G-S38-03	Φ0.38 [.015]
QCS-FL4G-S46-03	Φ0.46 [.018]
QCS-FL4G-S51-03	Φ0.51 [.02]
QCS-FL4G-S91-03	Φ0.91 [.036]



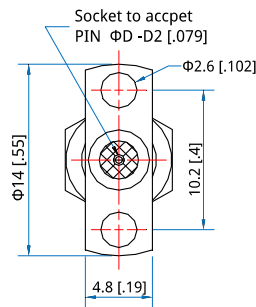
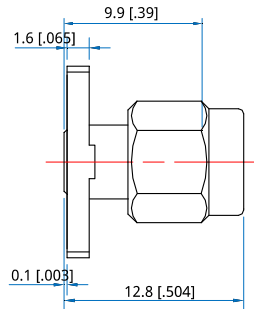
Part Number	ΦD
QCS-FL4G-S23-04	Φ0.23 [.009]
QCS-FL4G-S30-04	Φ0.3 [.012]
QCS-FL4G-S38-04	Φ0.38 [.015]
QCS-FL4G-S46-04	Φ0.46 [.018]
QCS-FL4G-S51-04	Φ0.51 [.02]



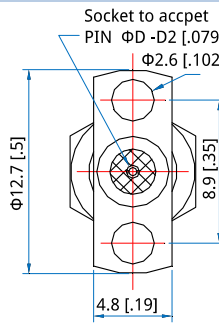
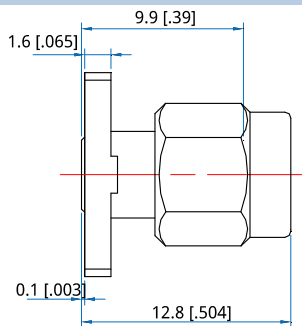
Part Number	ΦD
QCS-FYG-S23-01	Φ0.23 [.009]
QCS-FYG-S30-01	Φ0.3 [.012]
QCS-FYG-S38-01	Φ0.38 [.015]
QCS-FYG-S46-01	Φ0.46 [.018]
QCS-FYG-S51-01	Φ0.51 [.02]

Outline Drawings - SMA Field Replaceable Connectors


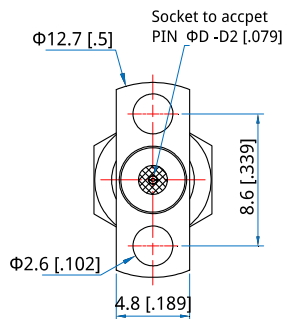
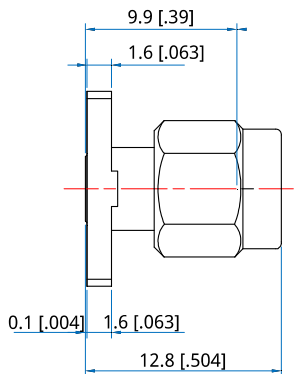
Part Number	ΦD
QCS-ML2G-S23-01	Φ0.23 [0.009]
QCS-ML2G-S30-01	Φ0.3 [0.12]
QCS-ML2G-S38-01	Φ0.38 [0.15]
QCS-ML2G-S46-01	Φ0.46 [0.18]
QCS-ML2G-S51-01	Φ0.51 [0.2]



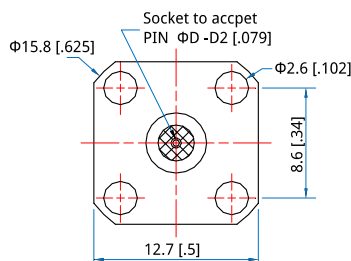
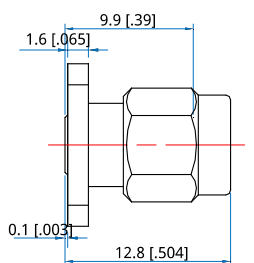
Part Number	ΦD
QCS-ML2G-S23-02	Φ0.23 [0.009]
QCS-ML2G-S30-02	Φ0.3 [0.12]
QCS-ML2G-S38-02	Φ0.38 [0.15]
QCS-ML2G-S46-02	Φ0.46 [0.18]
QCS-ML2G-S51-02	Φ0.51 [0.2]



Part Number	ΦD
QCS-ML2G-S23-03	Φ0.23 [0.009]
QCS-ML2G-S30-03	Φ0.3 [0.12]
QCS-ML2G-S38-03	Φ0.38 [0.15]
QCS-ML2G-S46-03	Φ0.46 [0.18]
QCS-ML2G-S51-03	Φ0.51 [0.2]

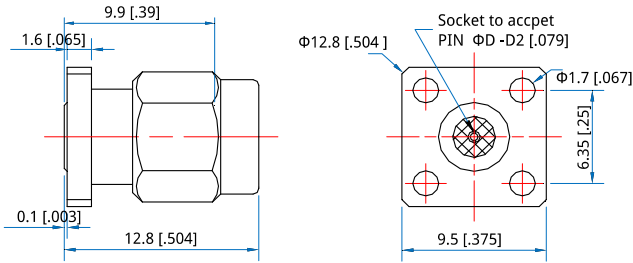


Part Number	ΦD
QCS-ML2G-S23-04	Φ0.23 [0.009]
QCS-ML2G-S30-04	Φ0.3 [0.12]
QCS-ML2G-S38-04	Φ0.38 [0.15]
QCS-ML2G-S46-04	Φ0.46 [0.18]
QCS-ML2G-S51-04	Φ0.51 [0.2]

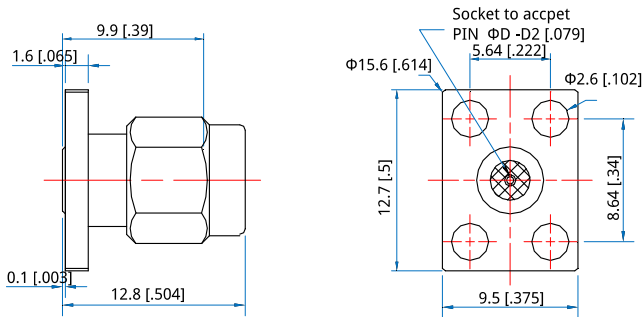


Part Number	ΦD
QCS-ML4G-S23-01	Φ0.23 [0.009]
QCS-ML4G-S30-01	Φ0.3 [0.12]
QCS-ML4G-S38-01	Φ0.38 [0.15]
QCS-ML4G-S46-01	Φ0.46 [0.18]
QCS-ML4G-S51-01	Φ0.51 [0.2]

Outline Drawings - SMA Field Replaceable Connectors

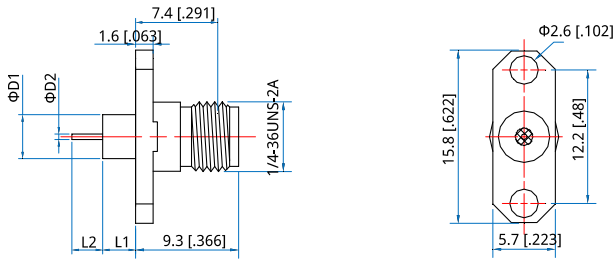


Part Number	ΦD
QCS-ML4G-S23-02	Φ0.23 [.009]
QCS-ML4G-S30-02	Φ0.3 [.012]
QCS-ML4G-S38-02	Φ0.38 [.015]
QCS-ML4G-S46-02	Φ0.46 [.018]
QCS-ML4G-S51-02	Φ0.51 [.02]

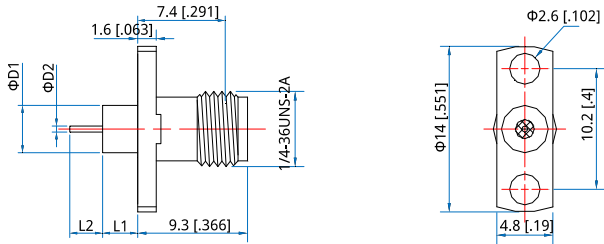


Part Number	ΦD
QCS-ML4G-S23-03	Φ0.23 [.009]
QCS-ML4G-S30-03	Φ0.3 [.012]
QCS-ML4G-S38-03	Φ0.38 [.015]
QCS-ML4G-S46-03	Φ0.46 [.018]
QCS-ML4G-S51-03	Φ0.51 [.02]

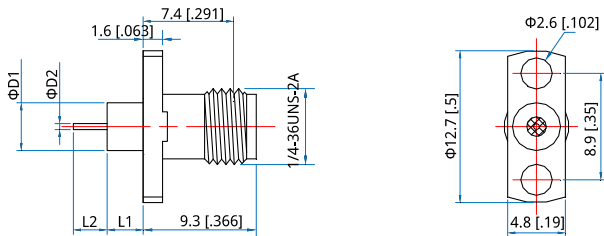
Outline Drawings - SMA Straight Terminal With Metal Connectors



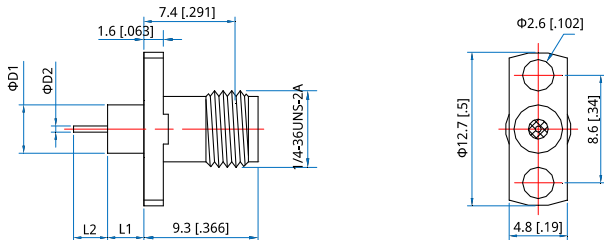
Part Number	ΦD1	ΦD2	L1	L2
QCS-FL2G-M80-01	4 [.158]	0.8 [.031]	4 [.158]	2 [.079]
QCS-FL2G-M38-02	4 [.158]	0.38 [.015]	3 [.118]	2 [.079]
QCS-FL2G-M38-03	4 [.158]	0.38 [.015]	3 [.118]	3 [.118]
QCS-FL2G-M38-04	4 [.158]	0.38 [.015]	3 [.118]	0.4 [.016]



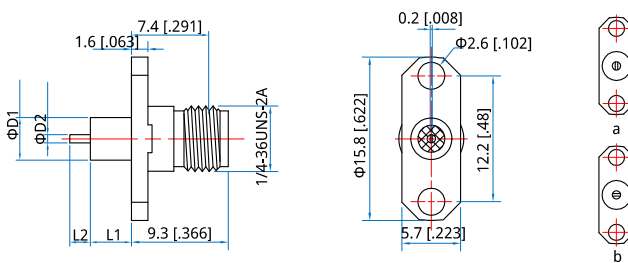
Part Number	ΦD1	ΦD2	L1	L2
QCS-FL2G-M80-05	4 [.158]	0.8 [.031]	4 [.158]	2 [.079]
QCS-FL2G-M38-06	4 [.158]	0.38 [.015]	3 [.118]	2 [.079]
QCS-FL2G-M38-07	4 [.158]	0.38 [.015]	3 [.118]	3 [.118]
QCS-FL2G-M38-08	4 [.158]	0.38 [.015]	3 [.118]	0.4 [.016]



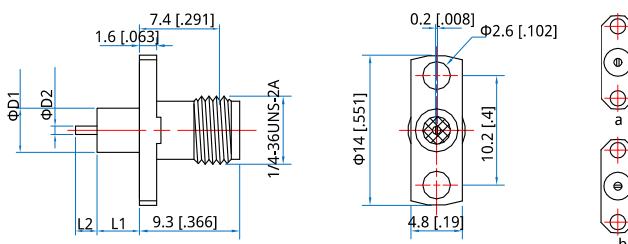
Part Number	ΦD1	ΦD2	L1	L2
QCS-FL2G-M80-09	4 [.158]	0.8 [.031]	4 [.158]	2 [.079]
QCS-FL2G-M38-10	4 [.158]	0.38 [.015]	3 [.118]	2 [.079]
QCS-FL2G-M38-11	4 [.158]	0.38 [.015]	3 [.118]	3 [.118]
QCS-FL2G-M38-12	4 [.158]	0.38 [.015]	3 [.118]	0.4 [.016]



Part Number	ΦD1	ΦD2	L1	L2
QCS-FL2G-M80-13	4 [.158]	0.8 [.031]	4 [.158]	2 [.079]
QCS-FL2G-M38-14	4 [.158]	0.38 [.015]	3 [.118]	2 [.079]
QCS-FL2G-M38-15	4 [.158]	0.38 [.015]	3 [.118]	3 [.118]
QCS-FL2G-M38-16	4 [.158]	0.38 [.015]	3 [.118]	0.4 [.016]

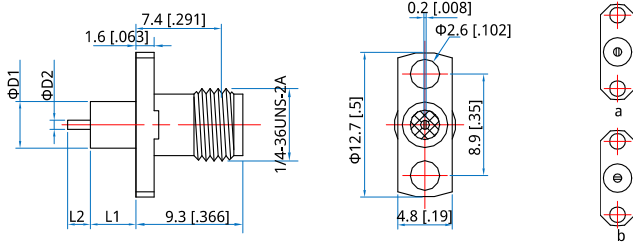


Part Number	ΦD1	ΦD2	L1	L2	
QCS-FL2G-M80-17	4 [.158]	0.8 [.031]	4 [.158]	1.5 [.059]	a
QCS-FL2G-M80-18	4 [.158]	0.8 [.031]	4 [.158]	1.5 [.059]	b

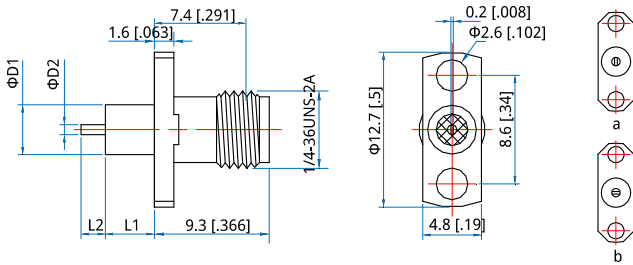


Part Number	ΦD1	ΦD2	L1	L2	
QCS-FL2G-M80-19	4 [.158]	0.8 [.031]	4 [.158]	1.5 [.059]	a
QCS-FL2G-M80-20	4 [.158]	0.8 [.031]	4 [.158]	1.5 [.059]	b

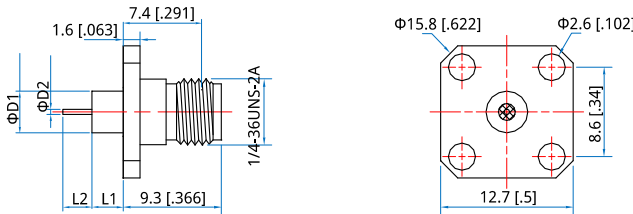
Outline Drawings - SMA Straight Terminal With Metal Connectors



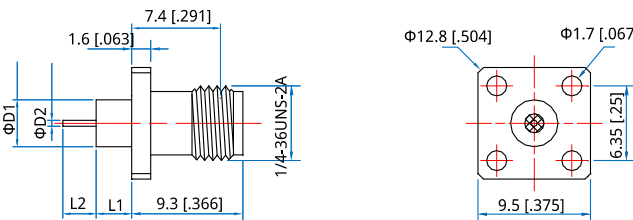
Part Number	ΦD1	ΦD2	L1	L2	
QCS-FL2G-M80-21	4 [.158]	0.8 [.031]	4 [.158]	1.5 [.059]	a
QCS-FL2G-M80-22	4 [.158]	0.8 [.031]	4 [.158]	1.5 [.059]	b



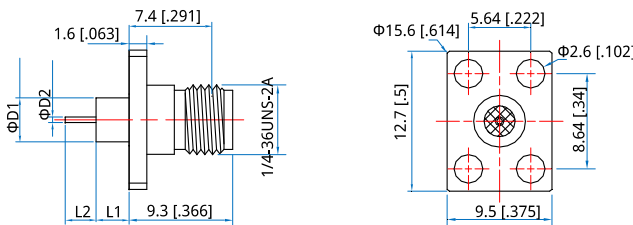
Part Number	ΦD1	ΦD2	L1	L2	
QCS-FL2G-M80-23	4 [.158]	0.8 [.031]	4 [.158]	1.5 [.059]	a
QCS-FL2G-M80-24	4 [.158]	0.8 [.031]	4 [.158]	1.5 [.059]	b



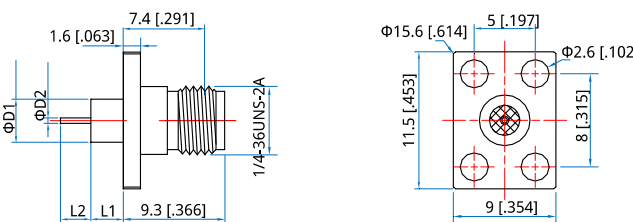
Part Number	ΦD1	ΦD2	L1	L2
QCS-FL4G-M80-01	4 [.158]	0.8 [.031]	4 [.158]	2 [.079]
QCS-FL4G-M38-02	4 [.158]	0.38 [.015]	3 [.118]	2 [.079]
QCS-FL4G-M38-03	4 [.158]	0.38 [.015]	3 [.118]	3 [.118]
QCS-FL4G-M38-04	4 [.158]	0.38 [.015]	3 [.118]	0.4 [.016]



Part Number	ΦD1	ΦD2	L1	L2
QCS-FL4G-M80-05	4 [.158]	0.8 [.031]	4 [.158]	2 [.079]
QCS-FL4G-M38-06	4 [.158]	0.38 [.015]	3 [.118]	2 [.079]
QCS-FL4G-M38-07	4 [.158]	0.38 [.015]	3 [.118]	3 [.118]
QCS-FL4G-M38-08	4 [.158]	0.38 [.015]	3 [.118]	0.4 [.016]

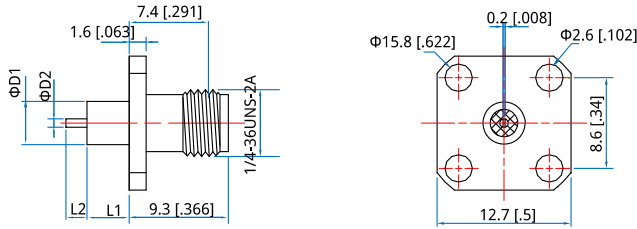


Part Number	ΦD1	ΦD2	L1	L2
QCS-FL4G-M80-09	4 [.158]	0.8 [.031]	4 [.158]	2 [.079]
QCS-FL4G-M38-10	4 [.158]	0.38 [.015]	3 [.118]	2 [.079]
QCS-FL4G-M38-11	4 [.158]	0.38 [.015]	3 [.118]	3 [.118]
QCS-FL4G-M38-12	4 [.158]	0.38 [.015]	3 [.118]	0.4 [.016]

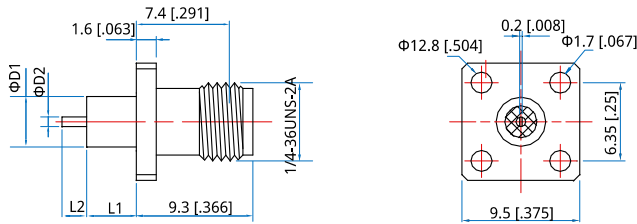


Part Number	ΦD1	ΦD2	L1	L2
QCS-FL4G-M80-13	4 [.158]	0.8 [.031]	4 [.158]	2 [.079]
QCS-FL4G-M38-14	4 [.158]	0.38 [.015]	3 [.118]	2 [.079]
QCS-FL4G-M38-15	4 [.158]	0.38 [.015]	3 [.118]	3 [.118]
QCS-FL4G-M38-16	4 [.158]	0.38 [.015]	3 [.118]	0.4 [.016]

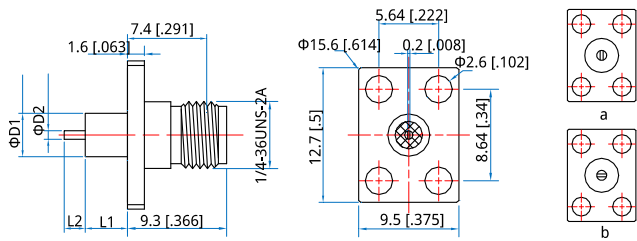
Outline Drawings - SMA Straight Terminal With Metal Connectors



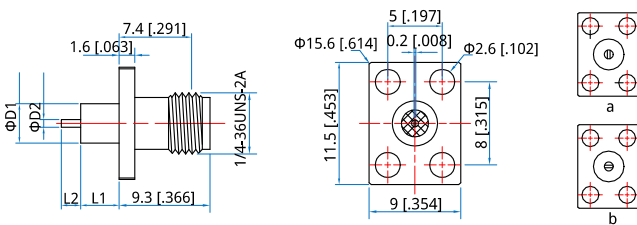
Part Number	ΦD1	ΦD2	L1	L2
QCS-FL4G-M100-17	6 [236]	1 [039]	4 [158]	1.5 [059]
QCS-FL4G-M80-18	4 [158]	0.8 [031]	4 [158]	1.5 [059]



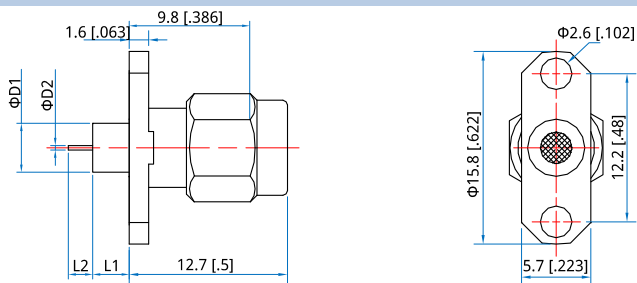
Part Number	ΦD1	ΦD2	L1	L2
QCS-FL4G-M80-19	4 [158]	0.8 [031]	4 [158]	1.5 [059]



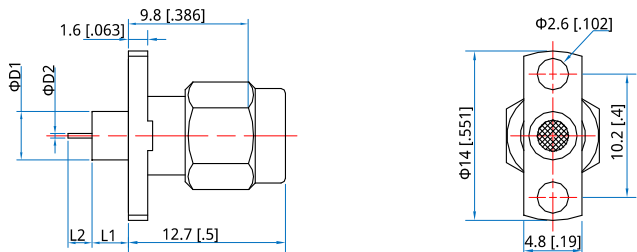
Part Number	ΦD1	ΦD2	L1	L2	
QCS-FL4G-M80-20	4 [158]	0.8 [031]	4 [158]	1.5 [059]	a
QCS-FL4G-M80-21	4 [158]	0.8 [031]	4 [158]	1.5 [059]	b



Part Number	ΦD1	ΦD2	L1	L2	
QCS-FL4G-M80-22	4 [158]	0.8 [031]	4 [158]	1.5 [059]	a
QCS-FL4G-M80-23	4 [158]	0.8 [031]	4 [158]	1.5 [059]	b

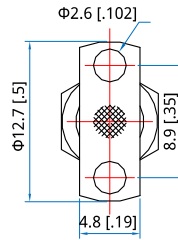
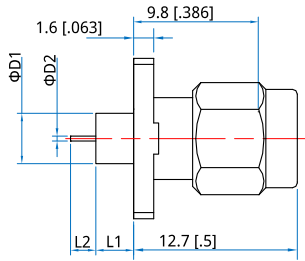


Part Number	ΦD1	ΦD2	L1	L2
QCS-ML2G-M38-01	4 [158]	0.38 [015]	3 [118]	2 [079]

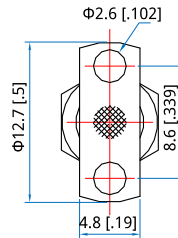
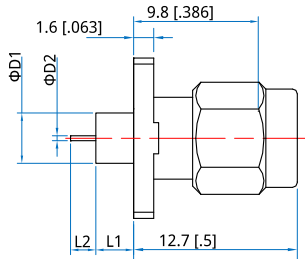


Part Number	ΦD1	ΦD2	L1	L2
QCS-ML2G-M38-02	4 [158]	0.38 [015]	3 [118]	2 [079]

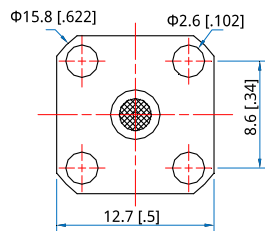
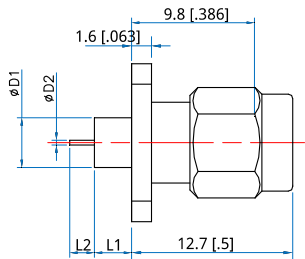
Outline Drawings - SMA Straight Terminal With Metal Connectors



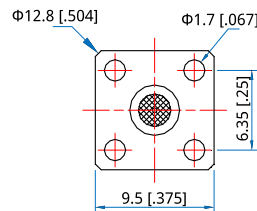
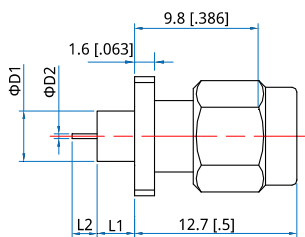
Part Number	ΦD1	ΦD2	L1	L2
QCS-ML2G-M38-03	4 [.158]	0.38 [.015]	3 [.118]	2 [.079]



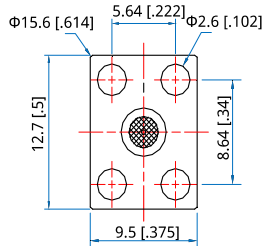
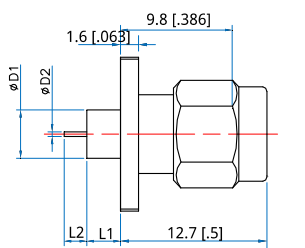
Part Number	ΦD1	ΦD2	L1	L2
QCS-ML2G-M38-04	4 [.158]	0.38 [.015]	3 [.118]	2 [.079]



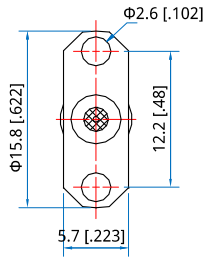
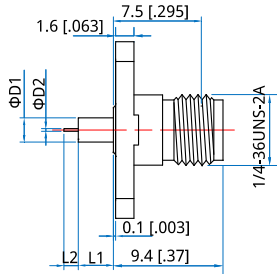
Part Number	ΦD1	ΦD2	L1	L2
QCS-ML4G-M38-01	4 [.158]	0.38 [.015]	3 [.118]	2 [.079]



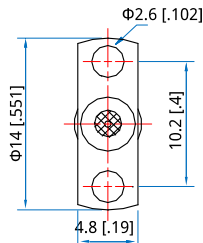
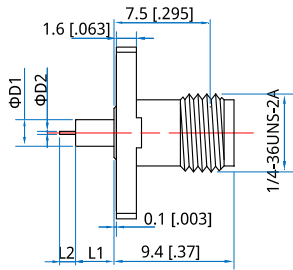
Part Number	ΦD1	ΦD2	L1	L2
QCS-ML4G-M38-02	4 [.158]	0.38 [.015]	3 [.118]	2 [.079]



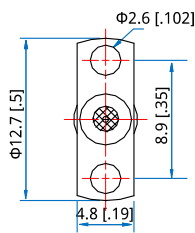
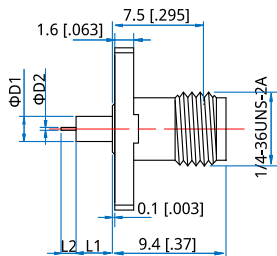
Part Number	ΦD1	ΦD2	L1	L2
QCS-ML2G-M38-03	4 [.158]	0.38 [.015]	3 [.118]	2 [.079]

Outline Drawings - SMA Straight Terminal With Dielectric Connectors


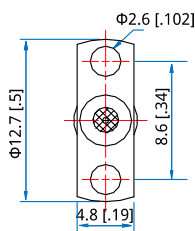
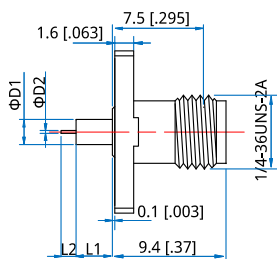
Part Number	ΦD1	ΦD2	L1	L2
QCS-FL2G-P30-01	2.2 [.087]	0.3 [.012]	3.2 [.126]	1.27 [.05]
QCS-FL2G-P64-02	3.9 [.154]	0.64 [.025]	15 [.591]	3 [.118]
QCS-FL2G-P64-03	2.1 [.083]	0.64 [.025]	15 [.591]	3 [.118]
QCS-FL2G-P30-04	2.2 [.087]	0.3 [.012]	4.3 [.169]	1.3 [.051]



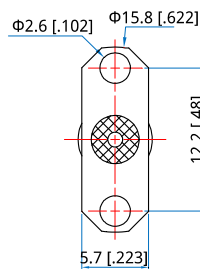
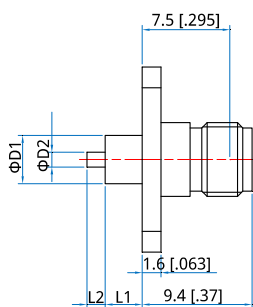
Part Number	ΦD1	ΦD2	L1	L2
QCS-FL2G-P30-05	2.2 [.087]	0.3 [.012]	3.2 [.126]	1.27 [.05]
QCS-FL2G-P64-06	2.1 [.083]	0.64 [.025]	15 [.591]	3 [.118]
QCS-FL2G-P30-07	2.2 [.087]	0.3 [.012]	4.3 [.169]	1.3 [.051]



Part Number	ΦD1	ΦD2	L1	L2
QCS-FL2G-P30-08	2.2 [.087]	0.3 [.012]	3.2 [.126]	1.27 [.05]
QCS-FL2G-P64-09	2.1 [.083]	0.64 [.025]	15 [.591]	3 [.118]
QCS-FL2G-P30-10	2.2 [.087]	0.3 [.012]	4.3 [.169]	1.3 [.051]

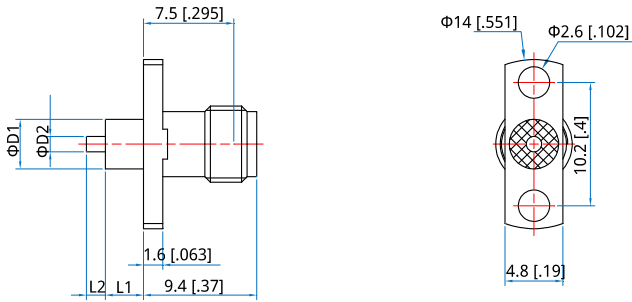


Part Number	ΦD1	ΦD2	L1	L2
QCS-FL2G-P30-11	2.2 [.087]	0.3 [.012]	3.2 [.126]	1.27 [.05]
QCS-FL2G-P64-12	2.1 [.083]	0.64 [.025]	15 [.591]	3 [.118]
QCS-FL2G-P30-13	2.2 [.087]	0.3 [.012]	4.3 [.169]	1.3 [.051]

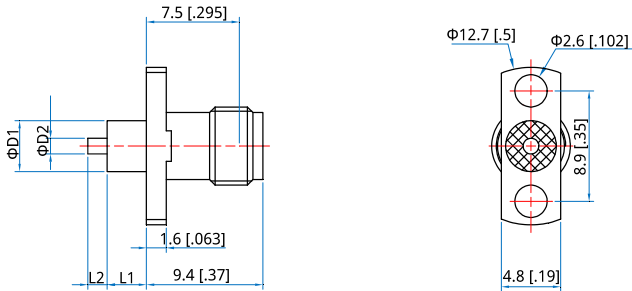


Part Number	ΦD1	ΦD2	L1	L2
QCS-FL2G-P127-14	4.1 [.161]	1.27 [.05]	3.17 [.125]	1.57 [.062]
QCS-FL2G-P127-15	4.1 [.161]	1.27 [.05]	5 [.197]	2 [.079]
QCS-FL2G-P127-16	4.1 [.161]	1.27 [.05]	5 [.197]	24 [.945]

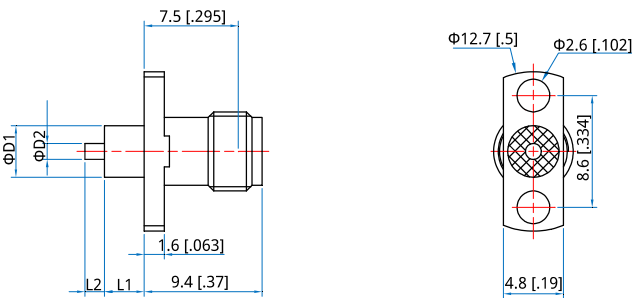
Outline Drawings - SMA Straight Terminal With Dielectric Connectors



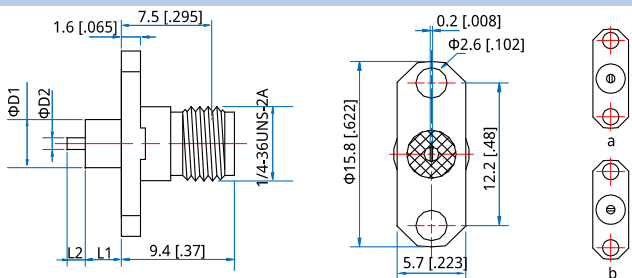
Part Number	ΦD1	ΦD2	L1	L2
QCS-FL2G-P127-17	4.1 [.161]	1.27 [.05]	3.17 [.125]	1.57 [.062]
QCS-FL2G-P127-18	4.1 [.161]	1.27 [.05]	5 [.197]	2 [.079]
QCS-FL2G-P127-19	4.1 [.161]	1.27 [.05]	5 [.197]	24 [.945]



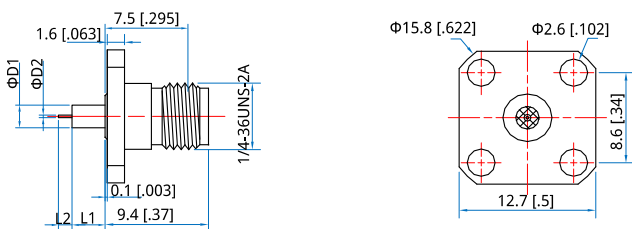
Part Number	ΦD1	ΦD2	L1	L2
QCS-FL2G-P127-20	4.1 [.161]	1.27 [.05]	3.17 [.125]	1.57 [.062]
QCS-FL2G-P127-21	4.1 [.161]	1.27 [.05]	5 [.197]	2 [.079]
QCS-FL2G-P127-22	4.1 [.161]	1.27 [.05]	5 [.197]	24 [.945]



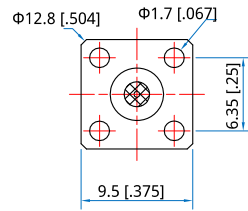
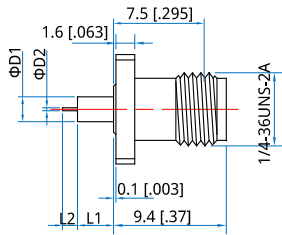
Part Number	ΦD1	ΦD2	L1	L2
QCS-FL2G-P127-23	4.1 [.161]	1.27 [.05]	3.17 [.125]	1.57 [.062]
QCS-FL2G-P127-24	4.1 [.161]	1.27 [.05]	5 [.197]	2 [.079]
QCS-FL2G-P127-25	4.1 [.161]	1.27 [.05]	5 [.197]	24 [.945]



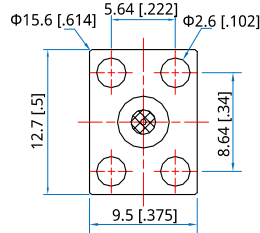
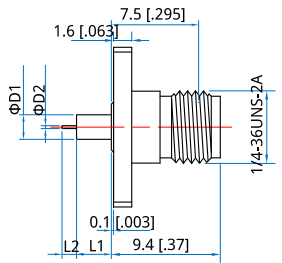
Part Number	ΦD1	ΦD2	L1	L2	
QCS-FL2G-P100-26	4.1 [.161]	1 [.04]	4 [.158]	1.5 [.059]	a
QCS-FL2G-P100-27	4.1 [.161]	1 [.04]	4 [.158]	1.5 [.059]	b
QCS-FL2G-P100-28	4.1 [.161]	1 [.04]	3 [.118]	1.5 [.059]	a
QCS-FL2G-P100-29	4.1 [.161]	1 [.04]	3 [.118]	1.5 [.059]	b



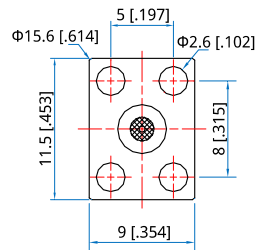
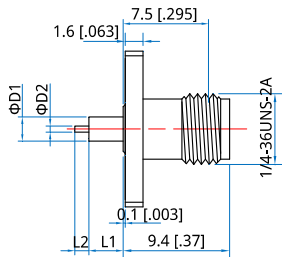
Part Number	ΦD1	ΦD2	L1	L2
QCS-FL4G-P30-01	2.2 [.087]	0.3 [.012]	3.2 [.126]	1.27 [.05]
QCS-FL4G-P30-02	2.2 [.087]	0.3 [.012]	4.3 [.169]	1.3 [.051]
QCS-FL4G-P64-03	3.9 [.154]	0.64 [.025]	15 [.591]	3 [.118]
QCS-FL4G-P64-04	2.1 [.083]	0.64 [.025]	15 [.591]	3 [.118]

Outline Drawings - SMA Straight Terminal With Dielectric Connectors


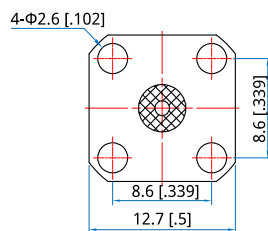
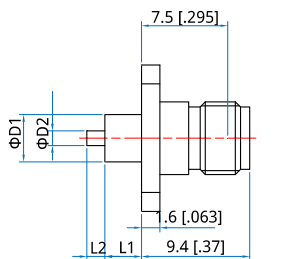
Part Number	ΦD1	ΦD2	L1	L2
QCS-FL4G-P30-05	2.2 [0.087]	0.3 [0.012]	3.2 [0.126]	1.27 [0.05]
QCS-FL4G-P30-06	2.2 [0.087]	0.3 [0.012]	4.3 [0.169]	1.3 [0.051]
QCS-FL4G-P64-07	2.1 [0.083]	0.64 [0.025]	15 [0.591]	3 [0.118]



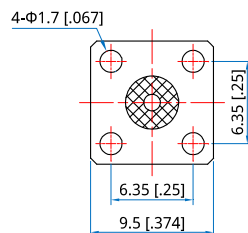
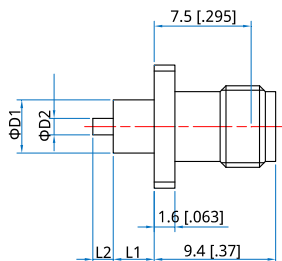
Part Number	ΦD1	ΦD2	L1	L2
QCS-FL4G-P30-08	2.2 [0.087]	0.3 [0.012]	3.2 [0.126]	1.27 [0.05]
QCS-FL4G-P64-09	2.1 [0.083]	0.64 [0.025]	15 [0.591]	3 [0.118]
QCS-FL4G-P30-10	2.2 [0.087]	0.3 [0.012]	4.3 [0.169]	1.3 [0.051]



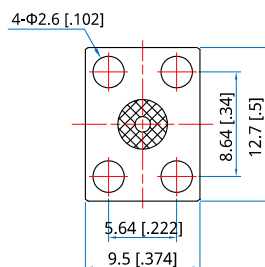
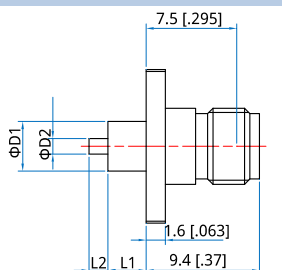
Part Number	ΦD1	ΦD2	L1	L2
QCS-FL4G-P30-11	2.2 [0.087]	0.3 [0.012]	3.2 [0.126]	1.27 [0.05]
QCS-FL4G-P64-12	2.1 [0.083]	0.64 [0.025]	15 [0.591]	3 [0.118]
QCS-FL4G-P30-13	2.2 [0.087]	0.3 [0.012]	4.3 [0.169]	1.3 [0.051]



Part Number	ΦD1	ΦD2	L1	L2
QCS-FL4G-P127-14	4.1 [0.161]	1.27 [0.05]	3.17 [0.125]	1.57 [0.062]
QCS-FL4G-P127-15	4.1 [0.161]	1.27 [0.05]	5 [0.197]	2 [0.079]
QCS-FL4G-P127-16	4.1 [0.161]	1.27 [0.05]	5 [0.197]	24 [0.945]

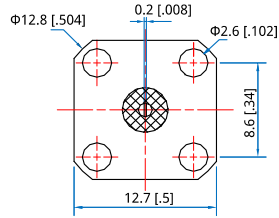
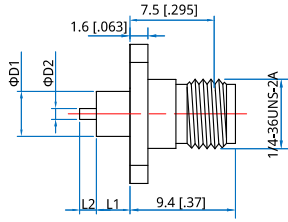


Part Number	ΦD1	ΦD2	L1	L2
QCS-FL4G-P127-17	4.1 [0.161]	1.27 [0.05]	3.17 [0.125]	1.57 [0.062]
QCS-FL4G-P127-18	4.1 [0.161]	1.27 [0.05]	5 [0.197]	2 [0.079]
QCS-FL4G-P127-19	4.1 [0.161]	1.27 [0.05]	5 [0.197]	24 [0.945]

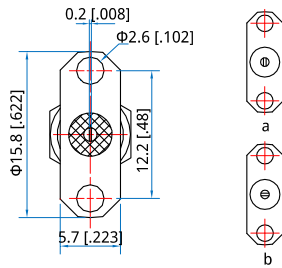
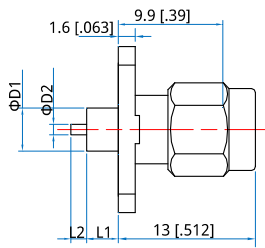


Part Number	ΦD1	ΦD2	L1	L2
QCS-FL4G-P127-20	4.1 [0.161]	1.27 [0.05]	3.17 [0.125]	1.57 [0.062]
QCS-FL4G-P127-21	4.1 [0.161]	1.27 [0.05]	5 [0.197]	2 [0.079]
QCS-FL4G-P127-22	4.1 [0.161]	1.27 [0.05]	5 [0.197]	24 [0.945]

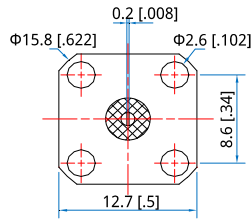
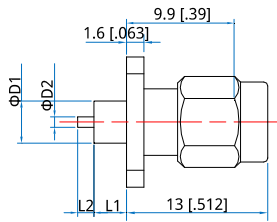
Outline Drawings - SMA Straight Terminal With Dielectric Connectors



Part Number	ΦD1	ΦD2	L1	L2
QCS-FL4G-P100-23	4.1 [.161]	1 [.04]	4 [.158]	1.5 [.059]
QCS-FL4G-P100-24	4.1 [.161]	1 [.04]	3 [.118]	1.5 [.059]

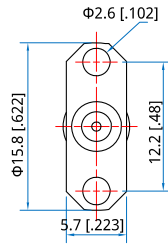
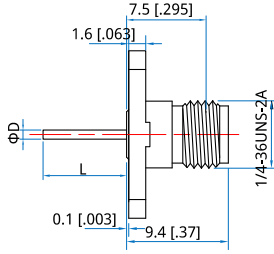


Part Number	ΦD1	ΦD2	L1	L2	
QCS-ML2G-P100-01	4.1 [.161]	1 [.04]	4 [.158]	1.5 [.059]	a
QCS-ML2G-P100-02	4.1 [.161]	1 [.04]	4 [.158]	1.5 [.059]	b

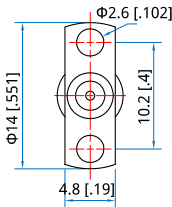
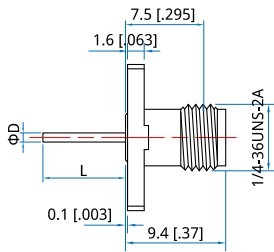


Part Number	ΦD1	ΦD2	L1	L2
QCS-ML4G-P100-01	4.1 [.161]	1 [.04]	4 [.158]	1.5 [.059]

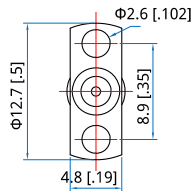
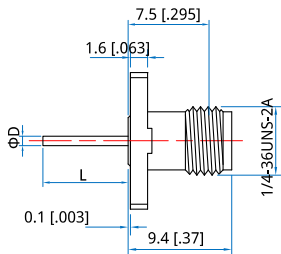
Outline Drawings - SMA Straight Terminal Without Dielectric Connectors



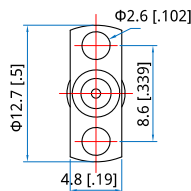
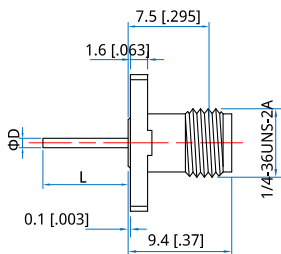
Part Number	ΦD	L
QCS-FL2G-D64-01	0.64 [.025]	18 [.71]
QCS-FL2G-D87-02	0.87 [.034]	26 [1.024]
QCS-FL2G-D87-03	0.87 [.034]	10.92 [.43]



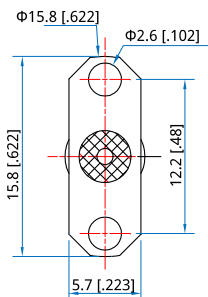
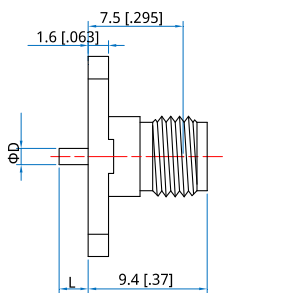
Part Number	ΦD	L
QCS-FL2G-D64-04	0.64 [.025]	18 [.71]
QCS-FL2G-D87-05	0.87 [.034]	26 [1.024]
QCS-FL2G-D87-06	0.87 [.034]	10.92 [.43]



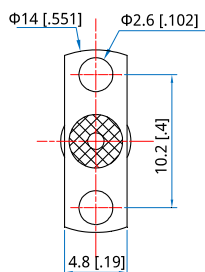
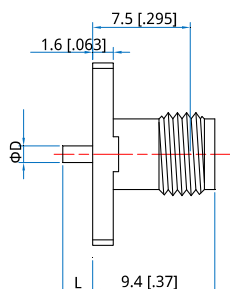
Part Number	ΦD	L
QCS-FL2G-D64-07	0.64 [.025]	18 [.71]
QCS-FL2G-D87-08	0.87 [.034]	26 [1.024]
QCS-FL2G-D87-09	0.87 [.034]	10.92 [.43]



Part Number	ΦD	L
QCS-FL2G-D64-10	0.64 [.025]	18 [.71]
QCS-FL2G-D87-11	0.87 [.034]	26 [1.024]
QCS-FL2G-D87-12	0.87 [.034]	10.92 [.43]

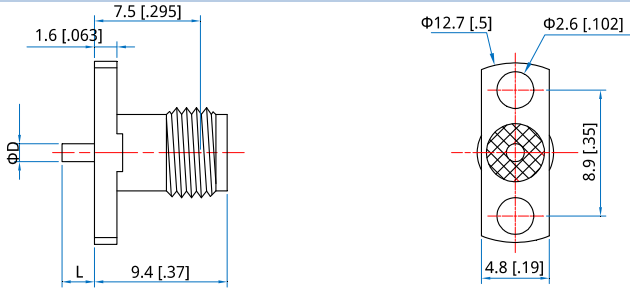


Part Number	ΦD	L
QCS-FL2G-D127-13	1.27 [.05]	2.3 [.09]

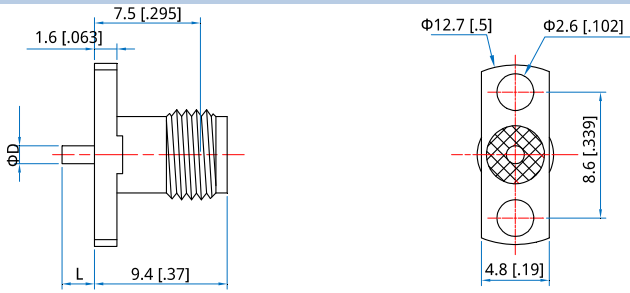


Part Number	ΦD	L
QCS-FL2G-D127-14	1.27 [.05]	2.3 [.09]

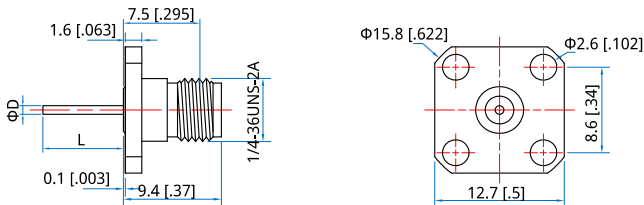
Outline Drawings - SMA Straight Terminal Without Dielectric Connectors



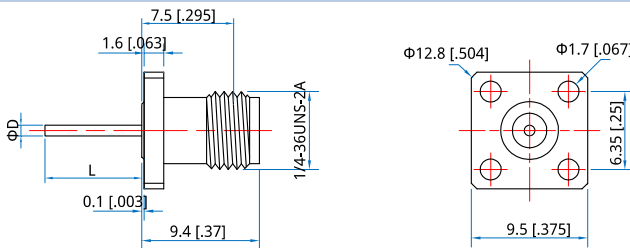
Part Number	ΦD	L
QCS-FL2G-D127-15	1.27 [.05]	2.3 [.09]



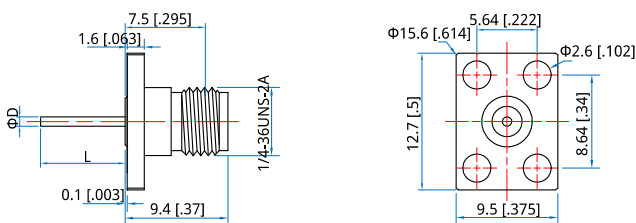
Part Number	ΦD	L
QCS-FL2G-D127-16	1.27 [.05]	2.3 [.09]



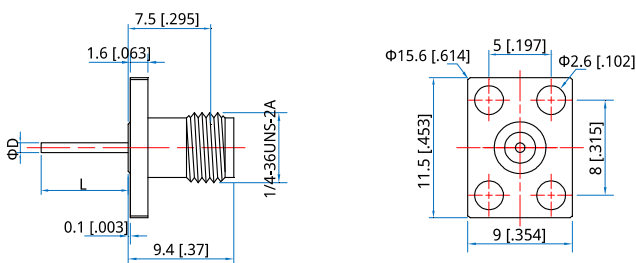
Part Number	ΦD	L
QCS-FL4G-D64-01	0.64 [.025]	18 [.71]
QCS-FL4G-D87-02	0.87 [.034]	26 [1.024]
QCS-FL4G-D87-03	0.87 [.034]	10.92 [.43]



Part Number	ΦD	L
QCS-FL4G-D64-04	0.64 [.025]	18 [.71]
QCS-FL4G-D87-05	0.87 [.034]	26 [1.024]
QCS-FL4G-D87-06	0.87 [.034]	10.92 [.43]

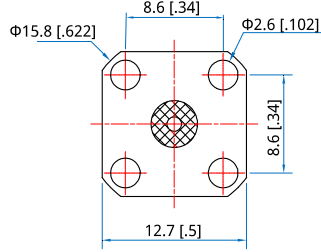
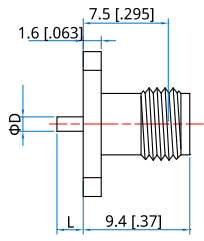


Part Number	ΦD	L
QCS-FL4G-D64-07	0.64 [.025]	18 [.71]
QCS-FL4G-D87-08	0.87 [.034]	26 [1.024]
QCS-FL4G-D87-09	0.87 [.034]	10.92 [.43]

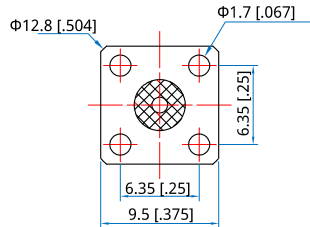
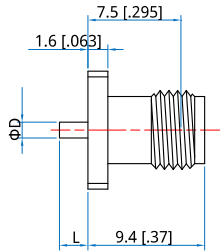


Part Number	ΦD	L
QCS-FL4G-D64-10	0.64 [.025]	18 [.71]
QCS-FL4G-D87-11	0.87 [.034]	26 [1.024]
QCS-FL4G-D87-12	0.87 [.034]	10.92 [.43]

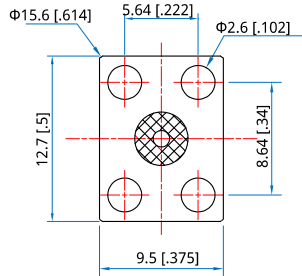
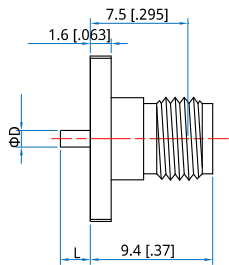
Outline Drawings - SMA Straight Terminal Without Dielectric Connectors



Part Number	ΦD	L
QCS-FL4G-D127-13	1.27 [0.05]	2.3 [0.09]

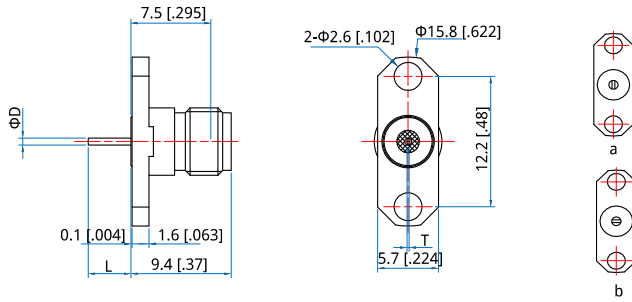


Part Number	ΦD	L
QCS-FL4G-D127-14	1.27 [0.05]	2.3 [0.09]

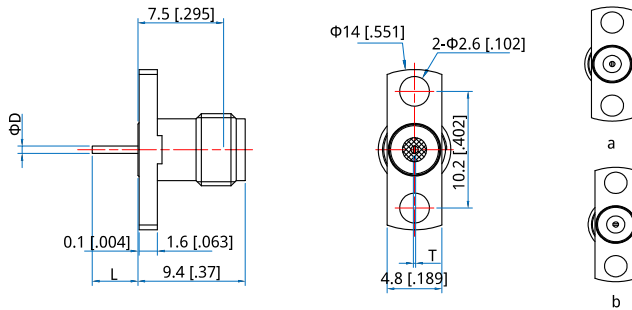


Part Number	ΦD	L
QCS-FL4G-D127-15	1.27 [0.05]	2.3 [0.09]

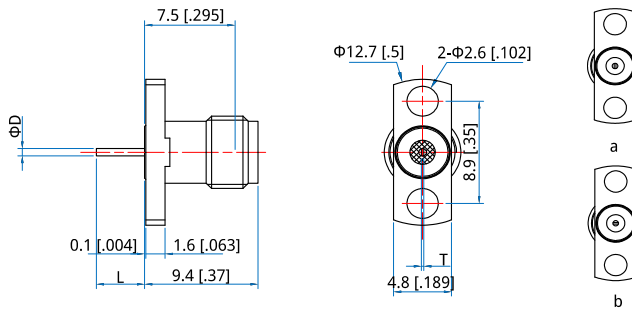
Outline Drawings - SMA Tab Terminal Connector



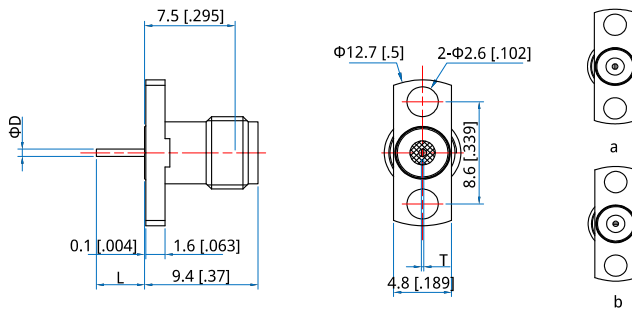
Part Number	ΦD	L	T	
QCS-FL2G-T64-01	0.64 [.025]	4 [.158]	0.2 [.008]	a
QCS-FL2G-T64-02	0.64 [.025]	4 [.158]	0.2 [.008]	b



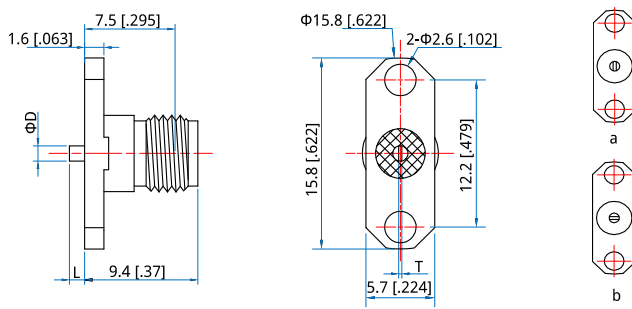
Part Number	ΦD	L	T	
QCS-FL2G-T64-03	0.64 [.025]	4 [.158]	0.2 [.008]	a
QCS-FL2G-T64-04	0.64 [.025]	4 [.158]	0.2 [.008]	b



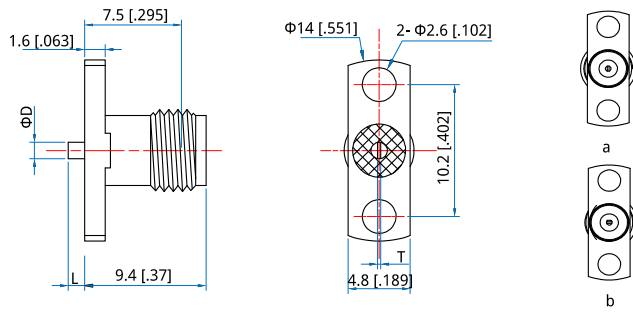
Part Number	ΦD	L	T	
QCS-FL2G-T64-05	0.64 [.025]	4 [.158]	0.2 [.008]	a
QCS-FL2G-T64-06	0.64 [.025]	4 [.158]	0.2 [.008]	b



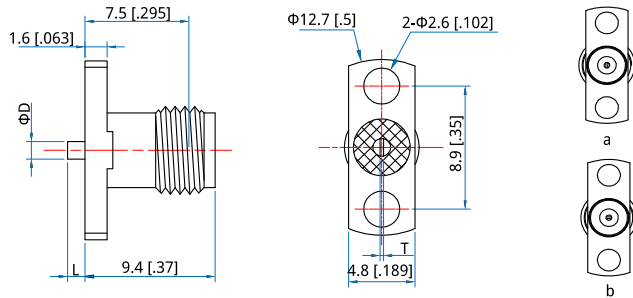
Part Number	ΦD	L	T	
QCS-FL2G-T64-07	0.64 [.025]	4 [.158]	0.2 [.008]	a
QCS-FL2G-T64-08	0.64 [.025]	4 [.158]	0.2 [.008]	b



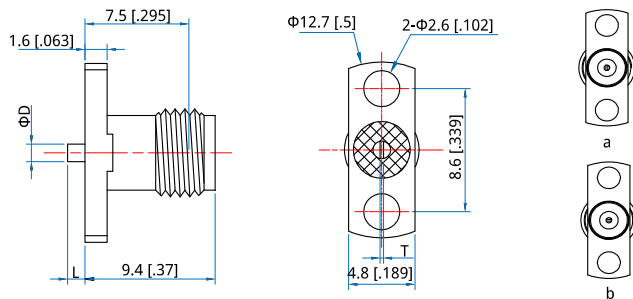
Part Number	ΦD	L	T	
QCS-FL2G-T127-09	1.27 [.05]	1.27 [.05]	0.15 [.006]	a
QCS-FL2G-T127-10	1.27 [.05]	1.27 [.05]	0.15 [.006]	b

Outline Drawings - SMA Tab Terminal Connector


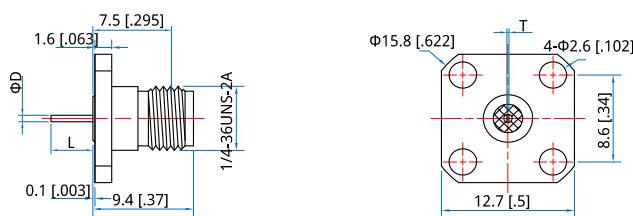
Part Number	ΦD	L	T	
QCS-FL2G-T127-11	1.27 [.05]	1.27 [.05]	0.15 [.006]	a
QCS-FL2G-T127-12	1.27 [.05]	1.27 [.05]	0.15 [.006]	b



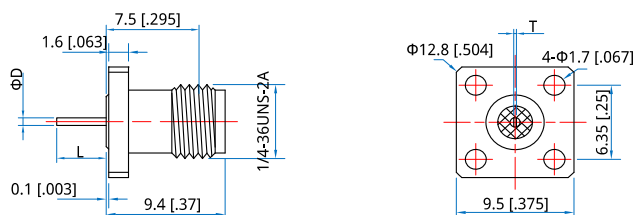
Part Number	ΦD	L	T	
QCS-FL2G-T127-13	1.27 [.05]	1.27 [.05]	0.15 [.006]	a
QCS-FL2G-T127-14	1.27 [.05]	1.27 [.05]	0.15 [.006]	b



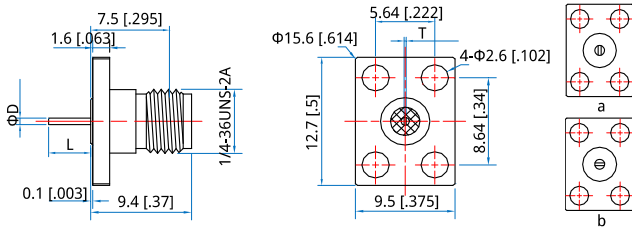
Part Number	ΦD	L	T	
QCS-FL2G-T127-15	1.27 [.05]	1.27 [.05]	0.15 [.006]	a
QCS-FL2G-T127-16	1.27 [.05]	1.27 [.05]	0.15 [.006]	b



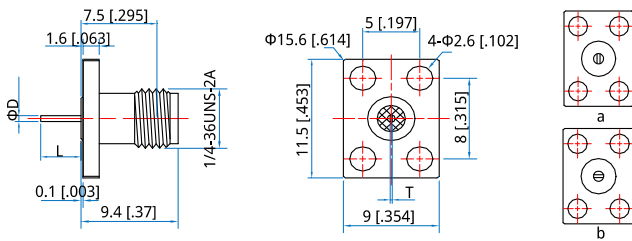
Part Number	ΦD	L	T
QCS-FL4G-T64-01	0.64 [.025]	4 [.158]	0.2 [.008]



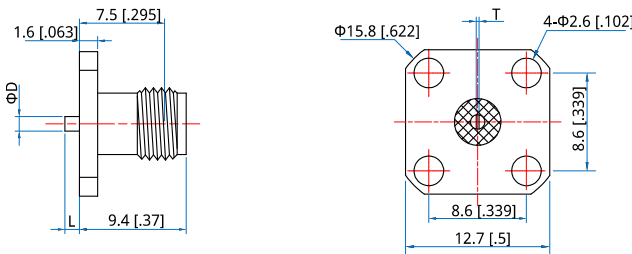
Part Number	ΦD	L	T
QCS-FL4G-T64-02	0.64 [.025]	4 [.158]	0.2 [.008]

Outline Drawings - SMA Tab Terminal Connector


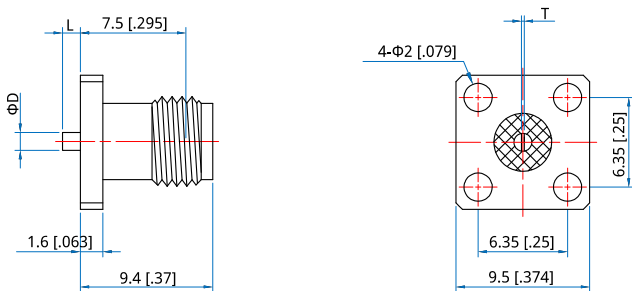
Part Number	ΦD	L	T	
QCS-FL4G-T64-03	0.64 [025]	4 [158]	0.2 [008]	a
QCS-FL4G-T64-04	0.64 [025]	4 [158]	0.2 [008]	b



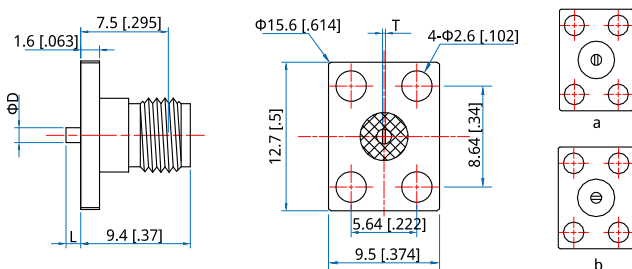
Part Number	ΦD	L	T	
QCS-FL4G-T64-05	0.64 [025]	4 [158]	0.2 [008]	a
QCS-FL4G-T64-06	0.64 [025]	4 [158]	0.2 [008]	b



Part Number	ΦD	L	T
QCS-FL4G-T127-07	1.27 [05]	1.27 [05]	0.15 [006]

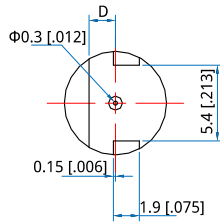
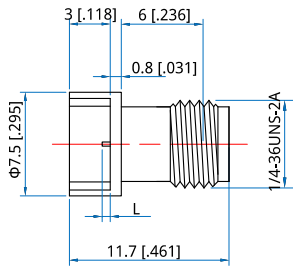


Part Number	ΦD	L	T
QCS-FL4G-T127-08	1.27 [05]	1.27 [05]	0.15 [006]

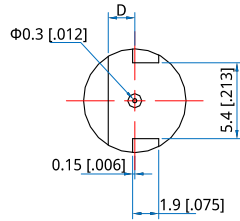
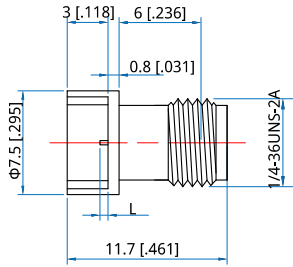


Part Number	ΦD	L	T	
QCS-FL4G-T127-09	1.27 [05]	1.27 [05]	0.15 [006]	a
QCS-FL4G-T127-10	1.27 [05]	1.27 [05]	0.15 [006]	b

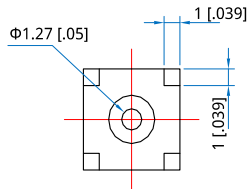
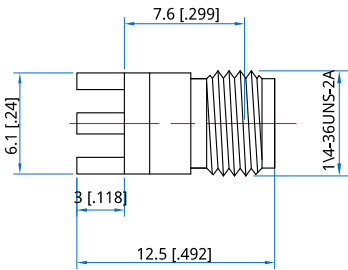
Outline Drawings - SMA Printed Circuit Board Mount Connector



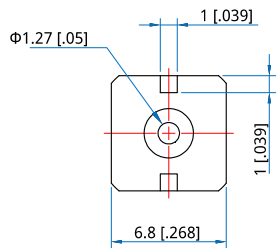
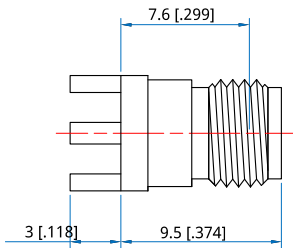
Part Number	D	L	Plate
QCS-FB-B30-01	1.93 [.076]	0.6 [.023]	1.78 [.07]
QCS-FB-B30-02	0.76 [.03]	0.6 [.023]	0.61 [.024]
QCS-FB-B30-03	1.02 [.04]	0.6 [.023]	0.87 [.034]
QCS-FB-B30-04	2.45 [.096]	0.6 [.023]	2.3 [.091]



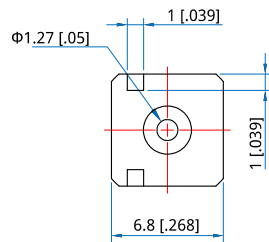
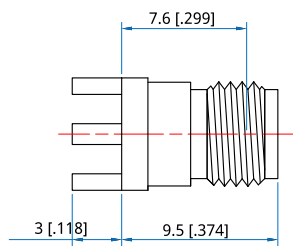
Part Number	D	L	Plate
QCS-FB-B30-05	1.93 [.076]	1.22 [.048]	1.78 [.07]
QCS-FB-B30-06	0.76 [.03]	1.22 [.048]	0.61 [.024]
QCS-FB-B30-07	1.02 [.04]	1.22 [.048]	0.87 [.034]
QCS-FB-B30-08	2.45 [.096]	1.22 [.048]	2.3 [.091]



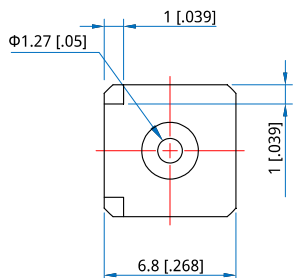
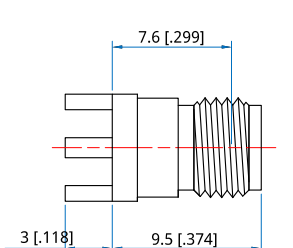
Part Number
QCS-FB-B127-01



Part Number
QCS-FB-B127-02

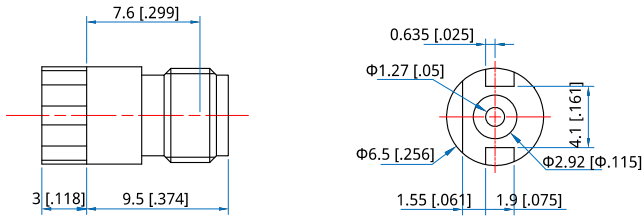


Part Number
QCS-FB-B127-03



Part Number
QCS-FB-B127-04

Outline Drawings - SMA Printed Circuit Board Mount Connector



Part Number
QCS-FB-B127-05

Electrical

Frequency: DC~18GHz
 VSWR: 1.15 max.
 Impedance of Dielectric: 5000MΩ min.
 Impedance of Inner Conduct: 1mΩ max.
 or:
 Impedance of Outer Conduct: 0.2mΩ max.
 or:
 Voltage Withstand: 1500V DC
 Impedance: 50Ω

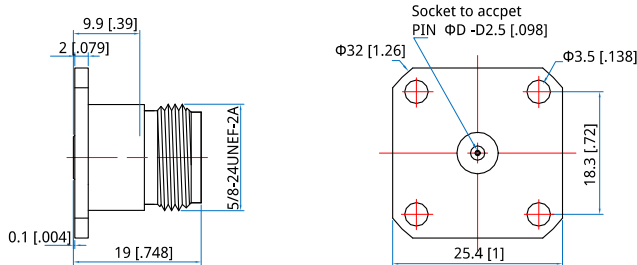
Mechanical

RF Connector: N
 Mating Life Cycle: 500 cycles
 Outer Conductor: Passivated SUS303 stainless steel
 Dielectric: PEI&PTFE
 Inner Conductor: Gold plated beryllium copper

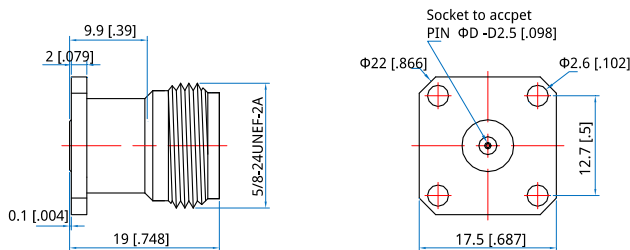
Environmental

Temperature: -55~+165°C

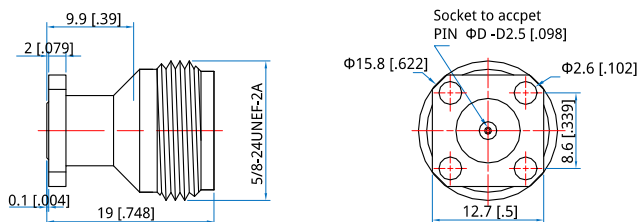
Outline Drawings - N Field Replaceable Connectors



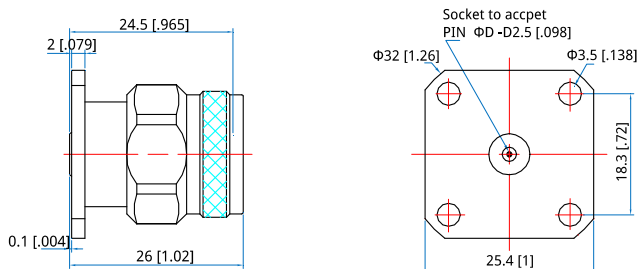
Part Number	ΦD
QCN-FL4G-S46-01	Φ0.46 [.018]
QCN-FL4G-S51-01	Φ0.51 [.02]
QCN-FL4G-S91-01	Φ0.91 [.036]



Part Number	ΦD
QCN-FL4G-S46-02	Φ0.46 [.018]
QCN-FL4G-S51-02	Φ0.51 [.02]
QCN-FL4G-S91-02	Φ0.91 [.036]

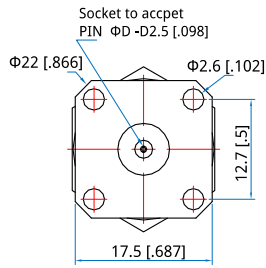
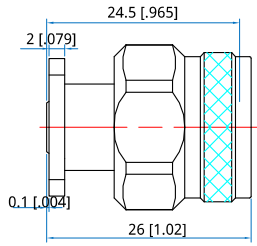


Part Number	ΦD
QCN-FL4G-S46-03	Φ0.46 [.018]
QCN-FL4G-S51-03	Φ0.51 [.02]
QCN-FL4G-S91-03	Φ0.91 [.036]

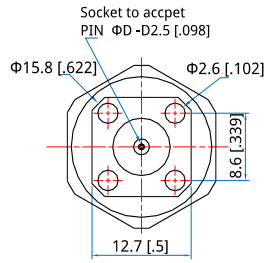
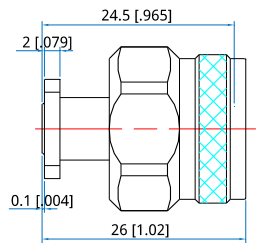


Part Number	ΦD
QCN-ML4G-S46-01	Φ0.46 [.018]
QCN-ML4G-S51-01	Φ0.51 [.02]
QCN-ML4G-S91-01	Φ0.91 [.036]

Outline Drawings - N Field Replaceable Connectors

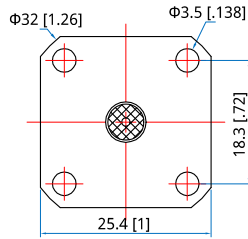
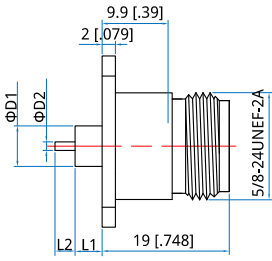


Part Number	ΦD
QCN-ML4G-S46-02	Φ0.46 [0.018]
QCN-ML4G-S51-02	Φ0.51 [0.02]
QCN-ML4G-S91-02	Φ0.91 [0.036]

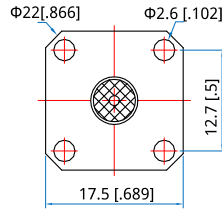
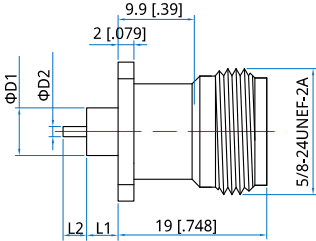


Part Number	ΦD
QCN-ML4G-S46-03	Φ0.46 [0.018]
QCN-ML4G-S51-03	Φ0.51 [0.02]
QCN-ML4G-S91-03	Φ0.91 [0.036]

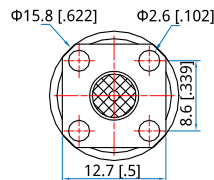
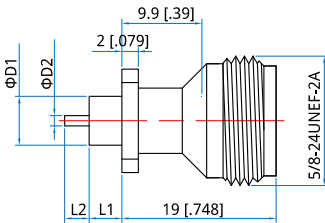
Outline Drawings - N Straight Terminal With Metal Connectors



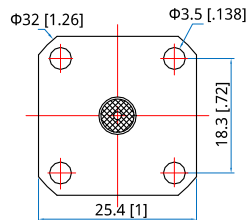
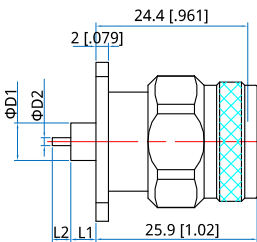
Part Number	$\phi D1$	$\phi D2$	L1	L2
QCN-FL4G-M127-01	6 [.236]	1.27 [.05]	4 [.158]	2 [.079]



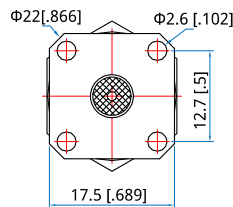
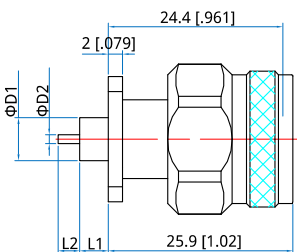
Part Number	$\phi D1$	$\phi D2$	L1	L2
QCN-FL4G-M127-02	6 [.236]	1.27 [.05]	4 [.158]	2 [.079]



Part Number	$\phi D1$	$\phi D2$	L1	L2
QCN-FL4G-M127-03	6 [.236]	1.27 [.05]	4 [.158]	2 [.079]

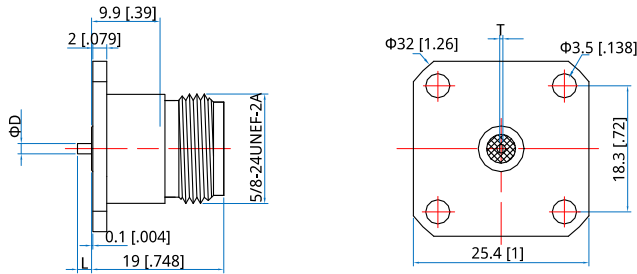


Part Number	$\phi D1$	$\phi D2$	L1	L2
QCN-ML4G-M127-01	6 [.236]	1.27 [.05]	4 [.158]	2 [.079]

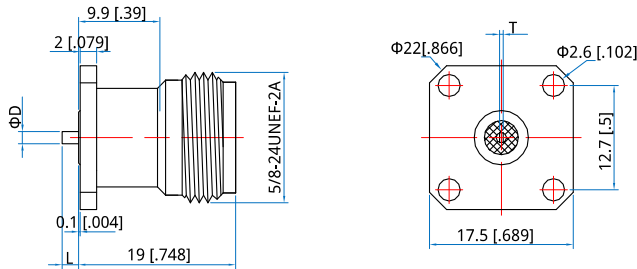


Part Number	$\phi D1$	$\phi D2$	L1	L2
QCN-ML4G-M127-02	6 [.236]	1.27 [.05]	4 [.158]	2 [.079]

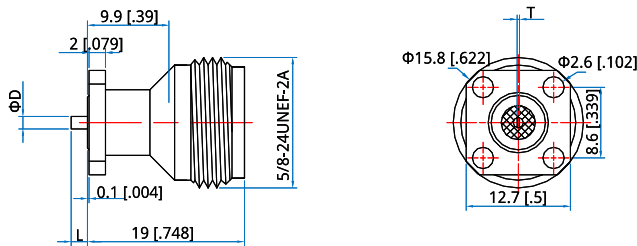
Outline Drawings - N Tab Terminal Connector



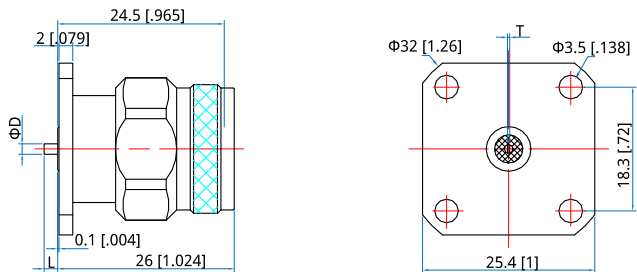
Part Number	ΦD	L	T
QCN-FL4G-T150-01	1.5 [0.059]	2 [0.079]	0.2 [0.008]



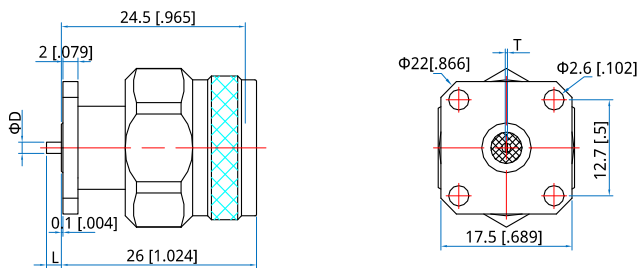
Part Number	ΦD	L	T
QCN-FL4G-T150-02	1.5 [0.059]	2 [0.079]	0.2 [0.008]



Part Number	ΦD	L	T
QCN-FL4G-T150-03	1.5 [0.059]	2 [0.079]	0.2 [0.008]



Part Number	ΦD	L	T
QCN-ML4G-T150-01	1.5 [0.059]	2 [0.079]	0.2 [0.008]



Part Number	ΦD	L	T
QCN-ML4G-T150-02	1.5 [0.059]	2 [0.079]	0.2 [0.008]

Electrical

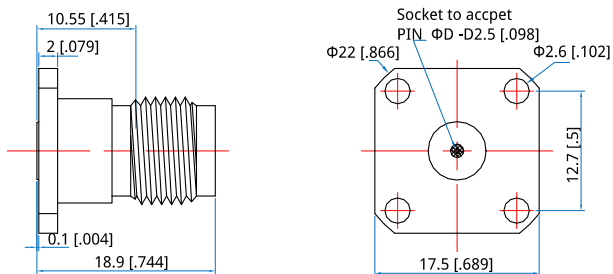
Frequency: DC~18GHz
 VSWR: 1.15 max.
 Impedance of Dielectric: 5000MΩ min.
 Impedance of Inner Conduct: 1.5mΩ max.
 or:
 Impedance of Outer Conduct: 0.2mΩ max.
 or:
 Voltage Withstand: 1500V DC
 Impedance: 50Ω

Mechanical

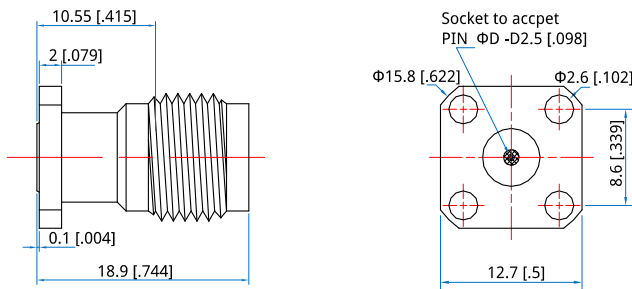
RF Connector: TNC
 Mating Life Cycle: 500 cycles
 Outer Conductor: Passivated SUS303 stainless steel
 Dielectric: PEI&PTFE
 Inner Conductor: Gold plated beryllium copper

Environmental

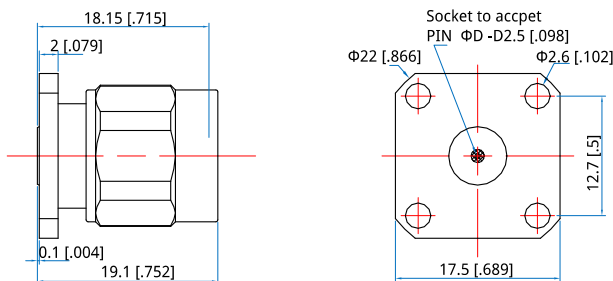
Temperature: -55~+165°C

Outline Drawings - TNC Field Replaceable Connectors


Part Number	ΦD
QCT-FL4G-S46-01	Φ0.46 [.018]
QCT-FL4G-S51-01	Φ0.51 [.02]
QCT-FL4G-S91-01	Φ0.91 [.036]

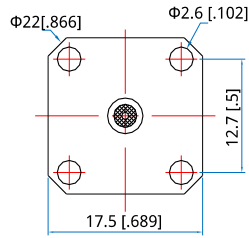
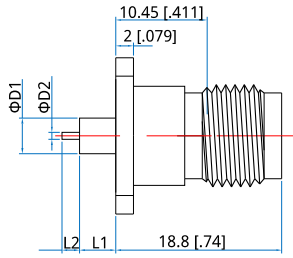


Part Number	ΦD
QCT-FL4G-S46-02	Φ0.46 [.018]
QCT-FL4G-S51-02	Φ0.51 [.02]
QCT-FL4G-S91-02	Φ0.91 [.036]

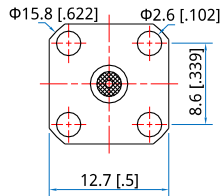
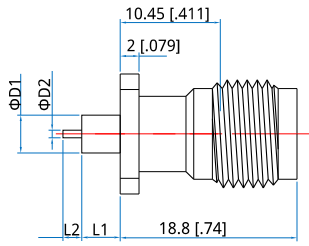


Part Number	ΦD
QCT-ML4G-S46-01	Φ0.46 [.018]
QCT-ML4G-S51-01	Φ0.51 [.02]
QCT-ML4G-S91-01	Φ0.91 [.036]

Outline Drawings - TNC Straight Terminal With Metal Connectors

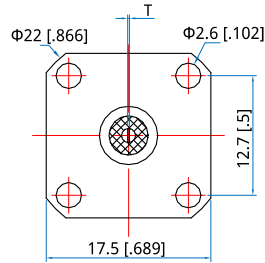
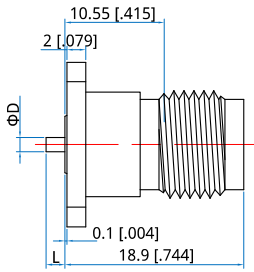


Part Number	ΦD1	ΦD2	L1	L2
QCT-FL4G-M80-01	4 [.158]	0.8 [.031]	4 [.158]	2 [.079]

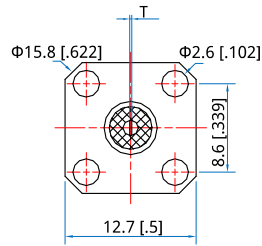
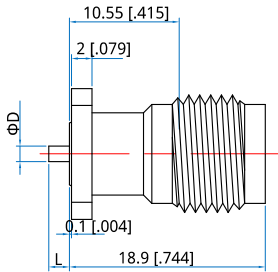


Part Number	ΦD1	ΦD2	L1	L2
QCT-FL4G-M80-02	4 [.158]	0.8 [.031]	4 [.158]	2 [.079]

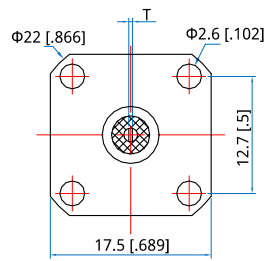
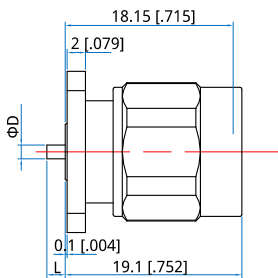
Outline Drawings - TNC Tab Terminal Connector



Part Number	ΦD	L	T
QCT-FL4G-T150-01	1.5 [.059]	2 [.079]	0.2 [.008]



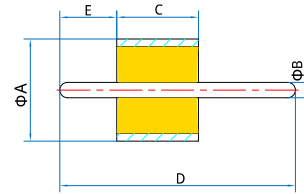
Part Number	ΦD	L	T
QCT-FL4G-T150-02	1.5 [.059]	2 [.079]	0.2 [.008]



Part Number	ΦD	L	T
QCT-FL4G-T150-01	1.5 [.059]	2 [.079]	0.2 [.008]

Mechanical

Outer Conductor: Gold Ppated kovar
 Dielectric: Glass
 Inner Conductor: Gold Ppated kovar

Outline Drawings

Environmental

Operation Temperature: -55~+125°C

Specifications

Part Number	Frequency	A	B	C	D	E
	(GHz)	mm [inch]	mm [inch]	mm [inch]	mm [inch]	mm [inch]
QCFT-030-1	65	2 [0.079]	0.3 [0.012]	1.4 [0.055]	4.4 [0.173]	1.5 [0.059]
QCFT-030-2	65	2 [0.079]	0.3 [0.012]	1.4 [0.055]	8 [0.315]	4.6 [0.181]
QCFT-030-3	65	2 [0.079]	0.3 [0.012]	1.6 [0.063]	3.9 [0.154]	0.4 [0.016]
QCFT-030-4	65	2 [0.079]	0.3 [0.012]	1.6 [0.063]	8 [0.315]	4.6 [0.181]
QCFT-038-1	40	2.5 [0.098]	0.38 [0.015]	1.6 [0.063]	8 [0.315]	4.6 [0.181]
QCFT-038-2	40	2.5 [0.098]	0.38 [0.015]	1.6 [0.063]	12 [0.472]	2 [0.079]
QCFT-038-3	40	2.5 [0.098]	0.38 [0.015]	2 [0.079]	9 [0.354]	2 [0.079]
QCFT-038-4	40	2.5 [0.098]	0.38 [0.015]	3 [0.118]	12 [0.472]	2.2 [0.087]
QCFT-045-1	40	2.8 [0.11]	0.45 [0.018]	1.6 [0.063]	5.2 [0.205]	1.1 [0.043]
QCFT-045-2	40	2.8 [0.11]	0.45 [0.018]	1.6 [0.063]	8 [0.315]	4.6 [0.181]
QCFT-045-3	40	2.8 [0.11]	0.45 [0.018]	1.6 [0.063]	12 [0.472]	3 [0.118]
QCFT-050-1	35	3 [0.118]	0.5 [0.02]	1.6 [0.063]	7.8 [0.307]	2 [0.079]
QCFT-050-2	35	3 [0.118]	0.5 [0.02]	1.6 [0.063]	12 [0.472]	5 [0.197]
QCFT-050-3	35	3 [0.118]	0.5 [0.02]	2 [0.079]	6 [0.236]	1.5 [0.059]
QCFT-050-4	35	3 [0.118]	0.5 [0.02]	2 [0.079]	6.5 [0.256]	2.2 [0.087]
QCFT-050-5	35	3 [0.118]	0.5 [0.02]	2 [0.079]	8.5 [0.335]	2.2 [0.087]
QCFT-050-6	35	3 [0.118]	0.5 [0.02]	2 [0.079]	12 [0.472]	4 [0.157]
QCFT-050-7	35	3 [0.118]	0.5 [0.02]	2 [0.079]	12 [0.472]	5 [0.197]
QCFT-050-8	35	3 [0.118]	0.5 [0.02]	2 [0.079]	14 [0.551]	4 [0.157]
QCFT-050-9	35	3 [0.118]	0.5 [0.02]	4.2 [0.165]	9 [0.354]	2.2 [0.087]
QCFT-050-10	25	3 [0.118]	0.5 [0.02]	4.7 [0.185]	9.4 [0.37]	2.2 [0.087]
QCFT-050-11	25	3 [0.118]	0.5 [0.02]	4.7 [0.185]	12 [0.472]	2.2 [0.087]
QCFT-080-1	25	4.7 [0.185]	0.8 [0.031]	2 [0.079]	6.5 [0.256]	2 [0.079]
QCFT-090-1	25	5.5 [0.217]	0.9 [0.035]	3 [0.118]	9 [0.354]	3 [0.118]

Broad Band & High Power

Microwave & Millimeter Wave Components



Qualwave Inc.

5F, Bldg. 1, Tianke Plaza, No. 999 Tiangong Ave.,
Tianfu New Area, Chengdu,
610213, China

Phone: +86-28-6115-4929
E-mail: sales@qualwave.com
Web: www.qualwave.com

